

CHANNEL & PROPOSED MOORING AREA OVERVIEW

MANATEE POCKET - MARTIN COUNTY



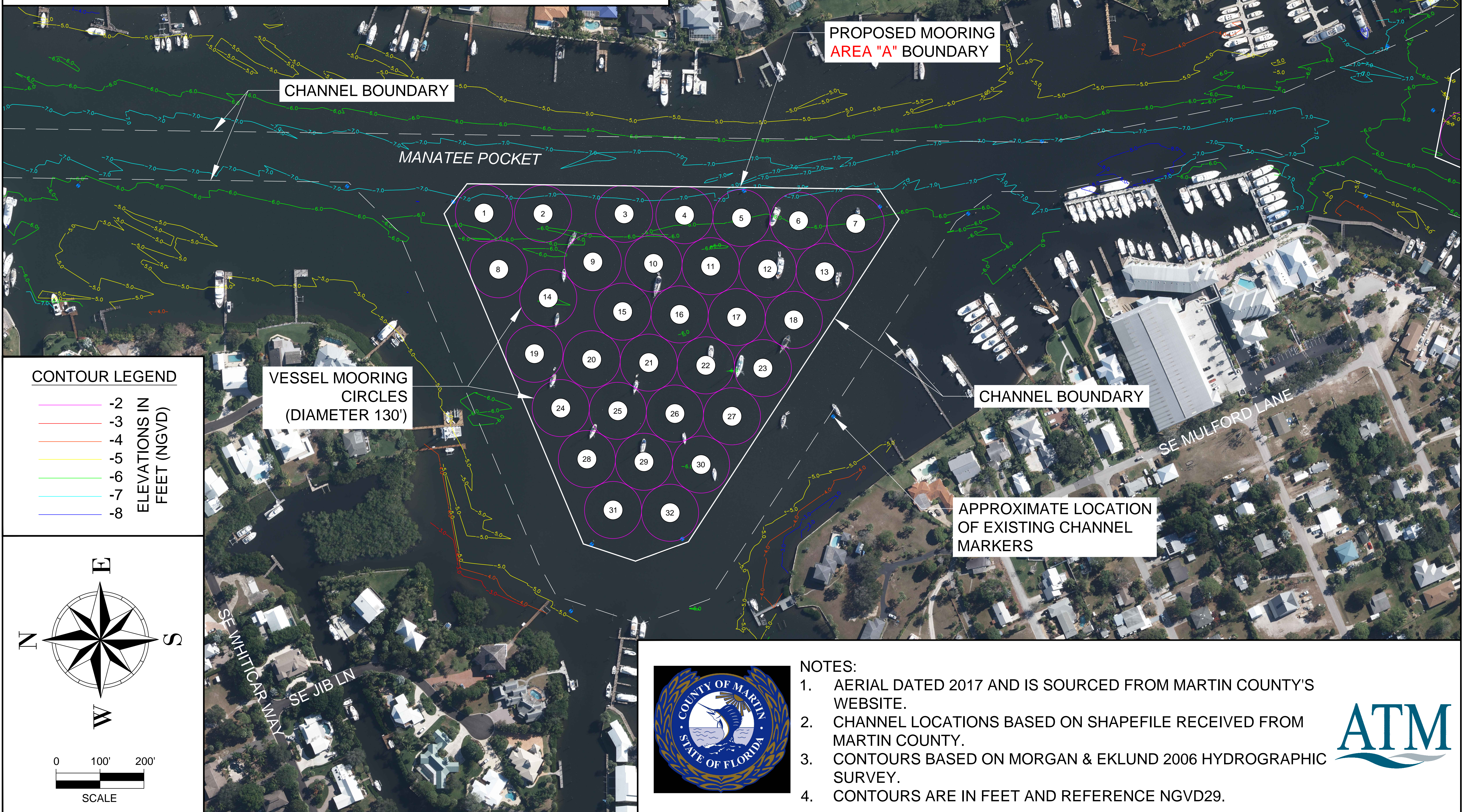
NOTES:

1. AERIAL DATED 2017 AND IS SOURCED FROM MARTIN COUNTY'S WEBSITE.
2. CHANNEL LOCATIONS BASED ON SHAPEFILE RECEIVED FROM MARTIN COUNTY.



PROPOSED MOORING AREA "A"

MANATEE POCKET - MARTIN COUNTY



PROPOSED MOORING AREA "A" BOUNDARY

CHANNEL BOUNDARY

MANATEE POCKET

CHANNEL BOUNDARY

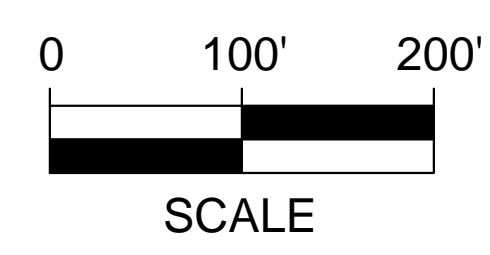
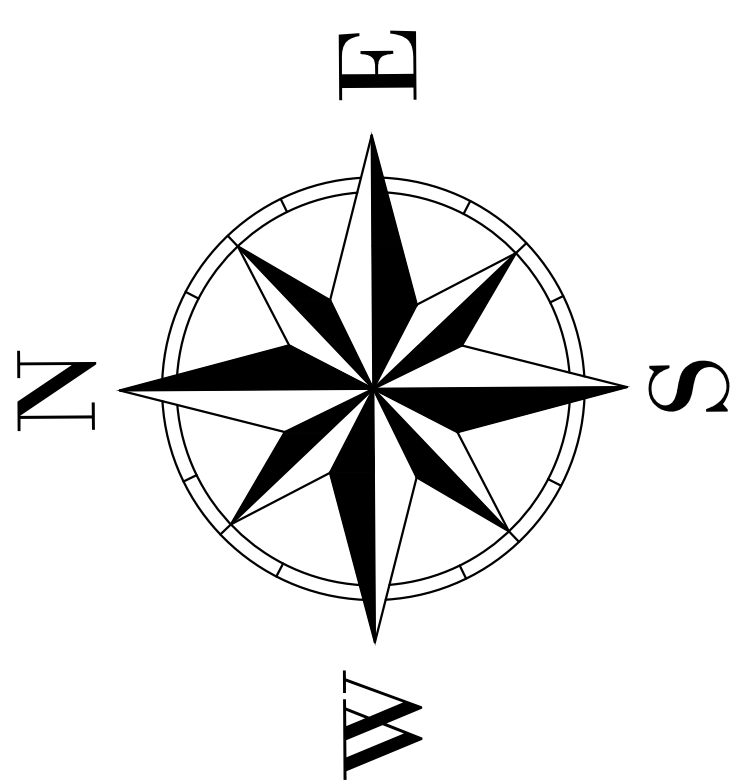
VESSEL MOORING CIRCLES (DIAMETER 130')

APPROXIMATE LOCATION OF EXISTING CHANNEL MARKERS

CONTOUR LEGEND

	-2
	-3
	-4
	-5
	-6
	-7
	-8

ELEVATIONS IN FEET (NGVD)

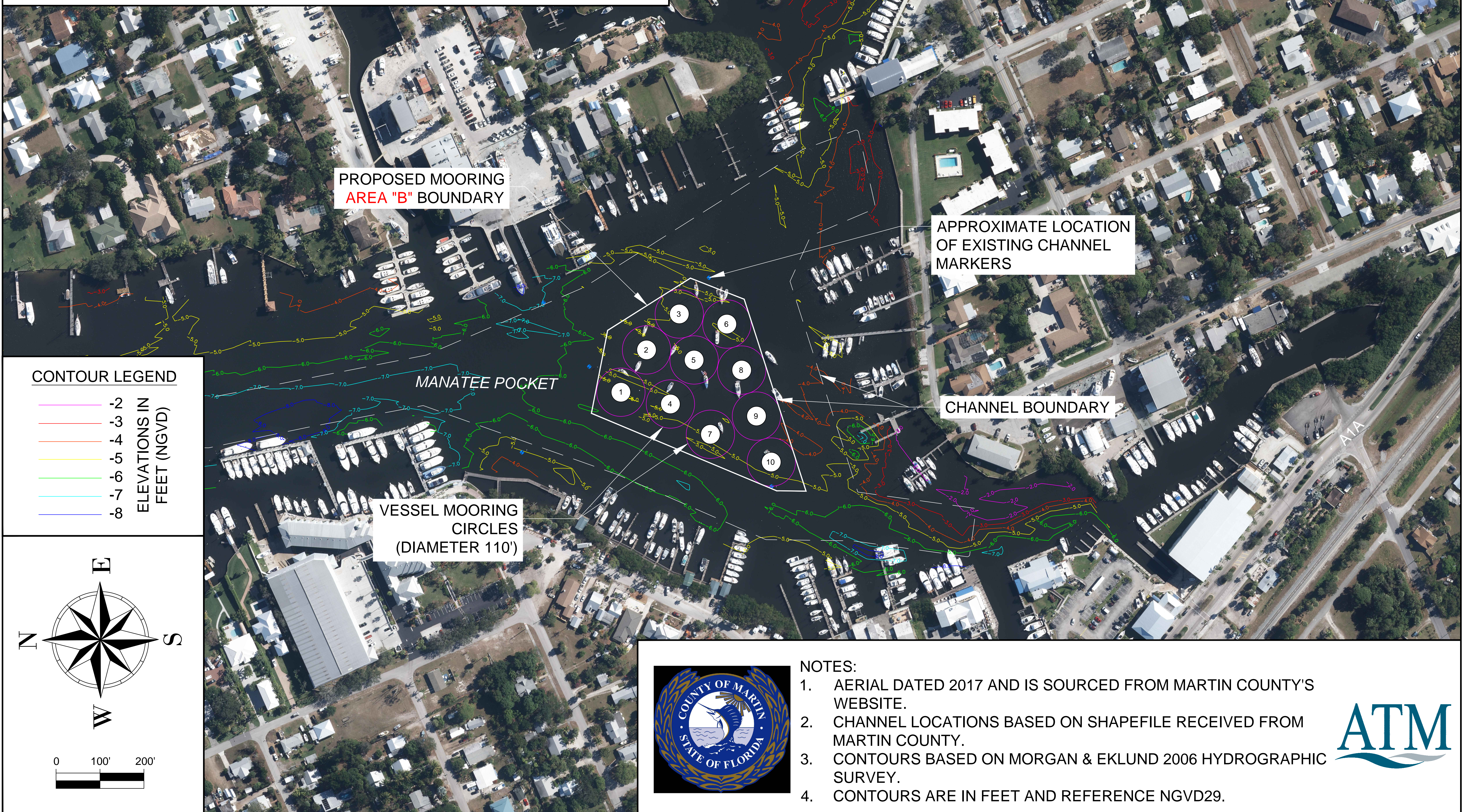


- NOTES:**
1. AERIAL DATED 2017 AND IS SOURCED FROM MARTIN COUNTY'S WEBSITE.
 2. CHANNEL LOCATIONS BASED ON SHAPEFILE RECEIVED FROM MARTIN COUNTY.
 3. CONTOURS BASED ON MORGAN & EKLUND 2006 HYDROGRAPHIC SURVEY.
 4. CONTOURS ARE IN FEET AND REFERENCE NGVD29.



PROPOSED MOORING AREA "B"

MANATEE POCKET - MARTIN COUNTY



PROPOSED MOORING AREA "B" BOUNDARY

APPROXIMATE LOCATION OF EXISTING CHANNEL MARKERS

CONTOUR LEGEND

Color	ELEVATIONS IN FEET (NGVD)
Purple	-2
Red	-3
Orange	-4
Yellow	-5
Green	-6
Cyan	-7
Blue	-8

MANATEE POCKET

VESSEL MOORING CIRCLES (DIAMETER 110')

CHANNEL BOUNDARY


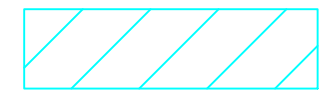
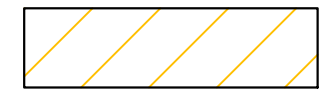
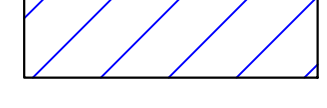


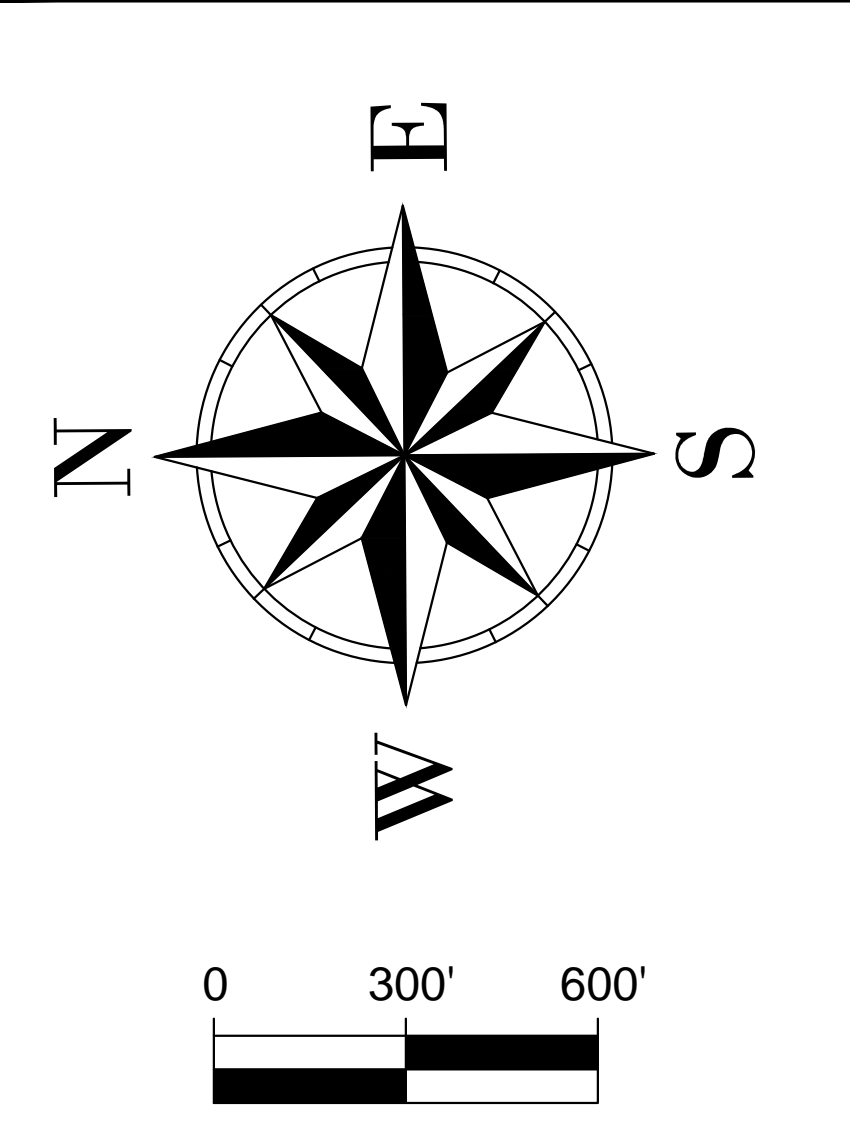
- NOTES:**
1. AERIAL DATED 2017 AND IS SOURCED FROM MARTIN COUNTY'S WEBSITE.
 2. CHANNEL LOCATIONS BASED ON SHAPEFILE RECEIVED FROM MARTIN COUNTY.
 3. CONTOURS BASED ON MORGAN & EKLUND 2006 HYDROGRAPHIC SURVEY.
 4. CONTOURS ARE IN FEET AND REFERENCE NGVD29.



CHANNEL, PROPOSED MOORING AREAS, & NO ANCHORING PERMITTED ZONES MANATEE POCKET - MARTIN COUNTY

NO ANCHORING PERMITTED ZONES - LEGEND

-  MARINA BUFFER - 150'
-  LAUNCH RAMP BUFFER - 150'
-  MOORING AREA BUFFER - 100'
-  NAVIGATION CHANNEL



- NOTES:
1. NO ANCHORING PERMITTED AREAS PER FLORIDA STATUE 327.4109.
 2. AERIAL DATED 2017 AND IS SOURCED FROM MARTIN COUNTY'S WEBSITE.
 3. CHANNEL LOCATIONS BASED ON SHAPEFILE RECEIVED FROM MARTIN COUNTY.



PROPOSED MOORING AREA "A" - WITH WIND

MANATEE POCKET - MARTIN COUNTY

MANATEE POCKET



PROPOSED MOORING
AREA "A" BOUNDARY

NE WIND

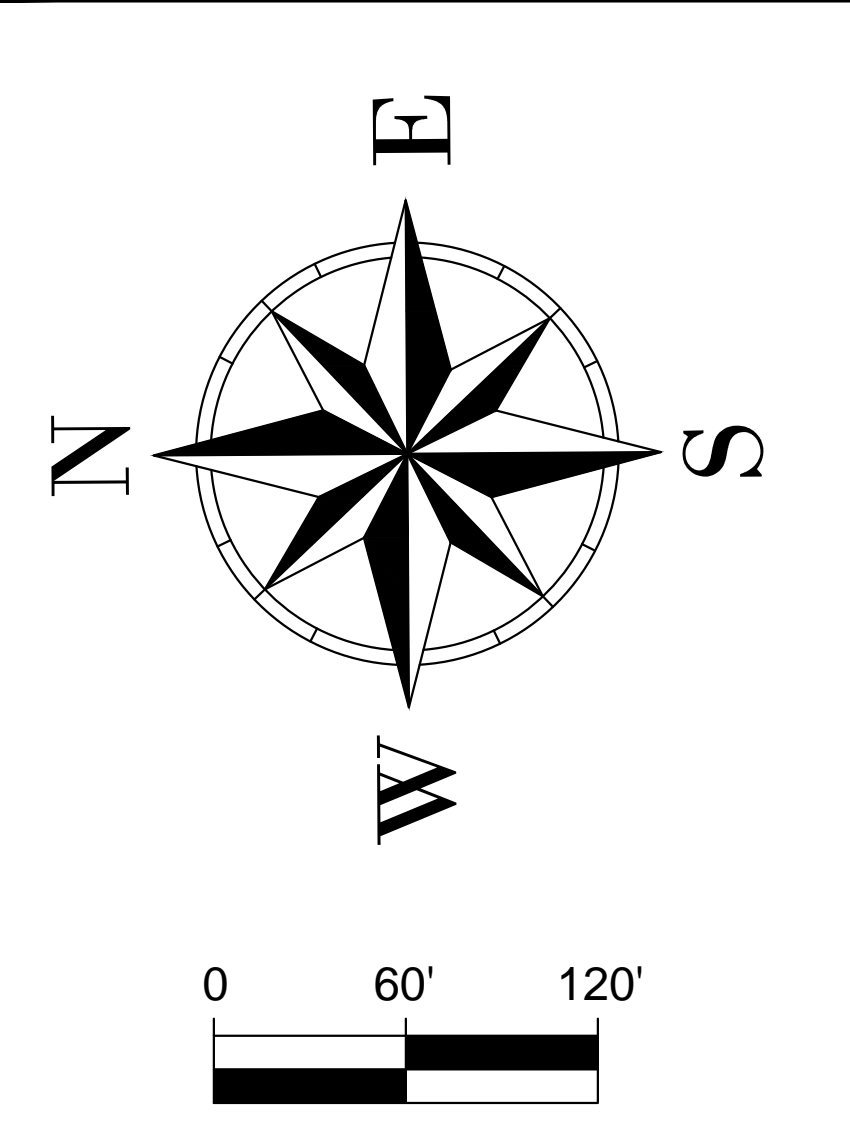
SE WIND

CHANNEL BOUNDARY

MOORING VESSEL (WIND
FROM NORTHEAST)

MOORING VESSEL (WIND
FROM SOUTHEAST)

APPROXIMATE LOCATION
OF EXISTING CHANNEL
MARKERS



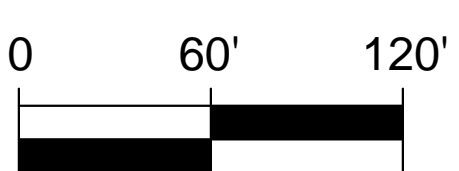
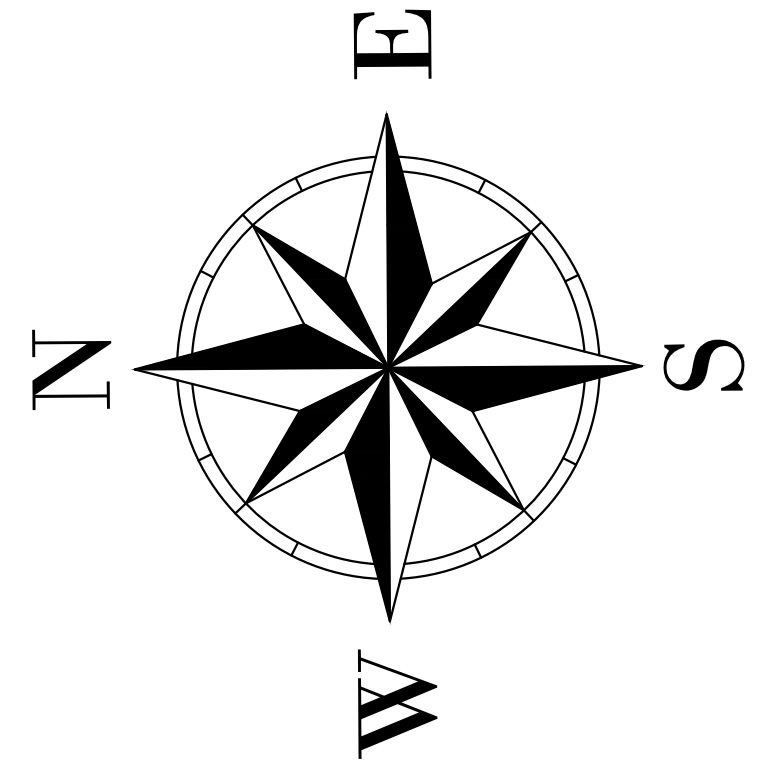
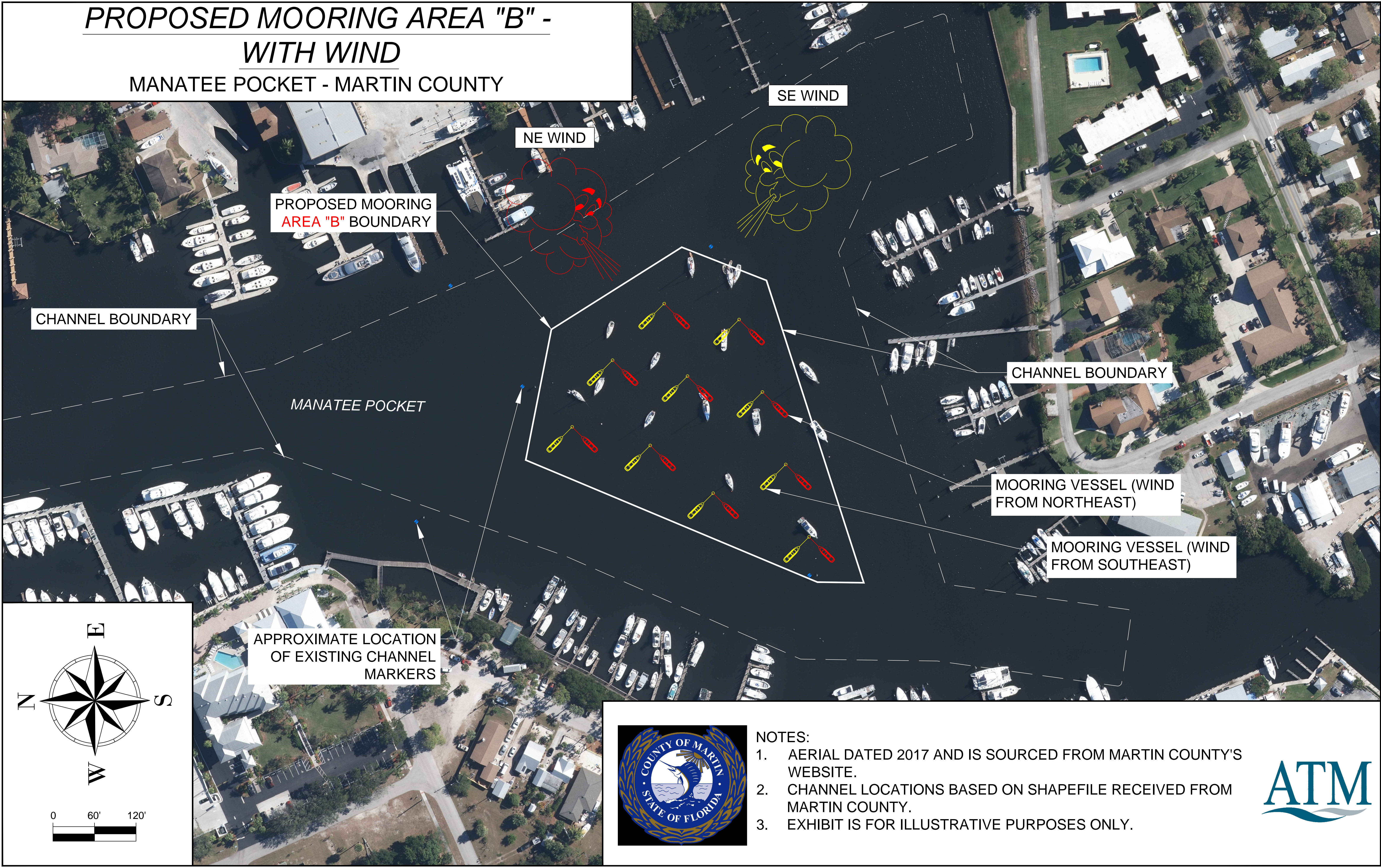
NOTES:

1. AERIAL DATED 2017 AND IS SOURCED FROM MARTIN COUNTY'S WEBSITE.
2. CHANNEL LOCATIONS BASED ON SHAPEFILE RECEIVED FROM MARTIN COUNTY.
3. EXHIBIT IS FOR ILLUSTRATIVE PURPOSES ONLY.



PROPOSED MOORING AREA "B" - WITH WIND

MANATEE POCKET - MARTIN COUNTY



APPROXIMATE LOCATION
OF EXISTING CHANNEL
MARKERS



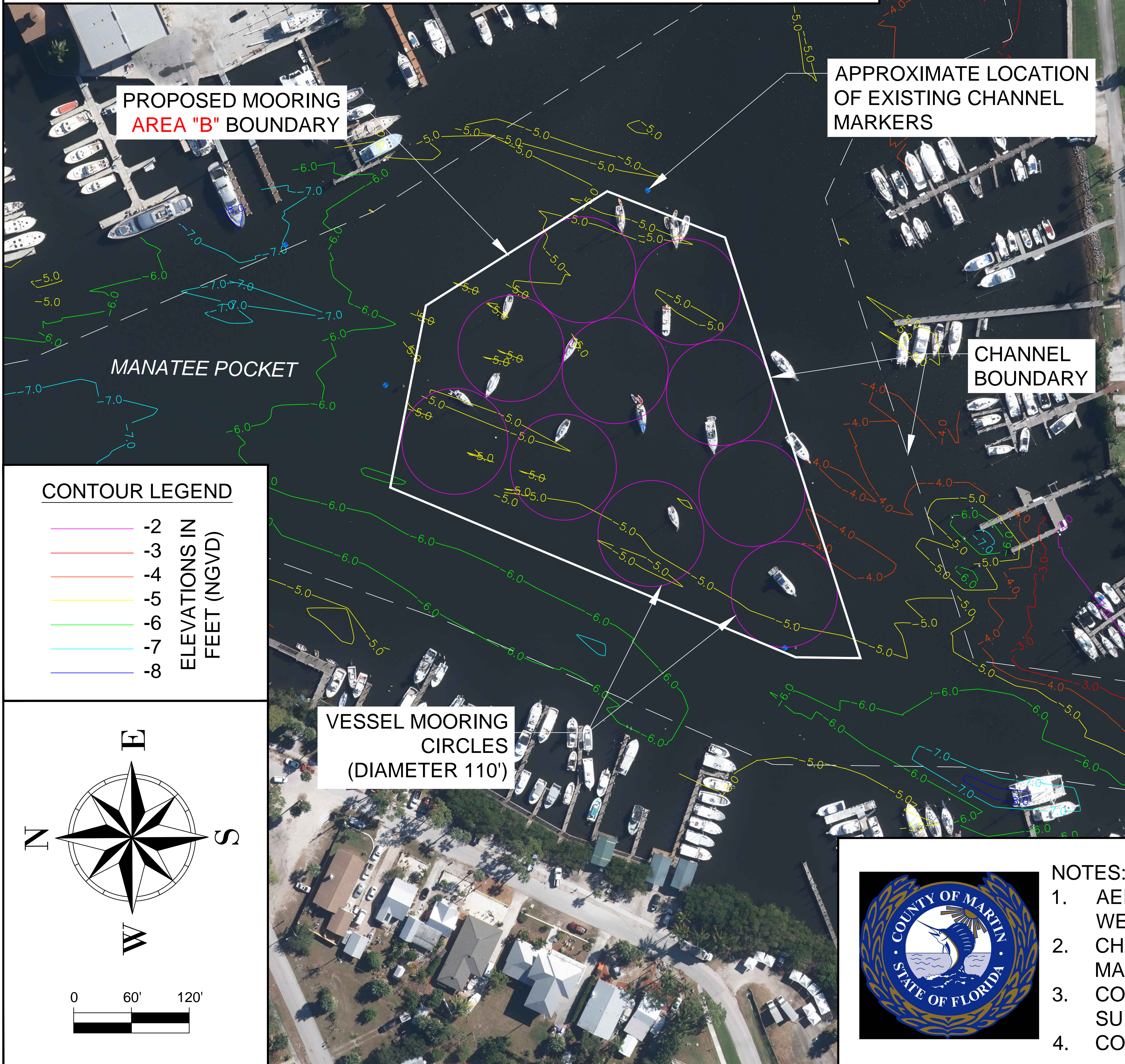
NOTES:

1. AERIAL DATED 2017 AND IS SOURCED FROM MARTIN COUNTY'S WEBSITE.
2. CHANNEL LOCATIONS BASED ON SHAPEFILE RECEIVED FROM MARTIN COUNTY.
3. EXHIBIT IS FOR ILLUSTRATIVE PURPOSES ONLY.



TYPICAL MOORING STATION DETAILS

MANATEE POCKET - MARTIN COUNTY



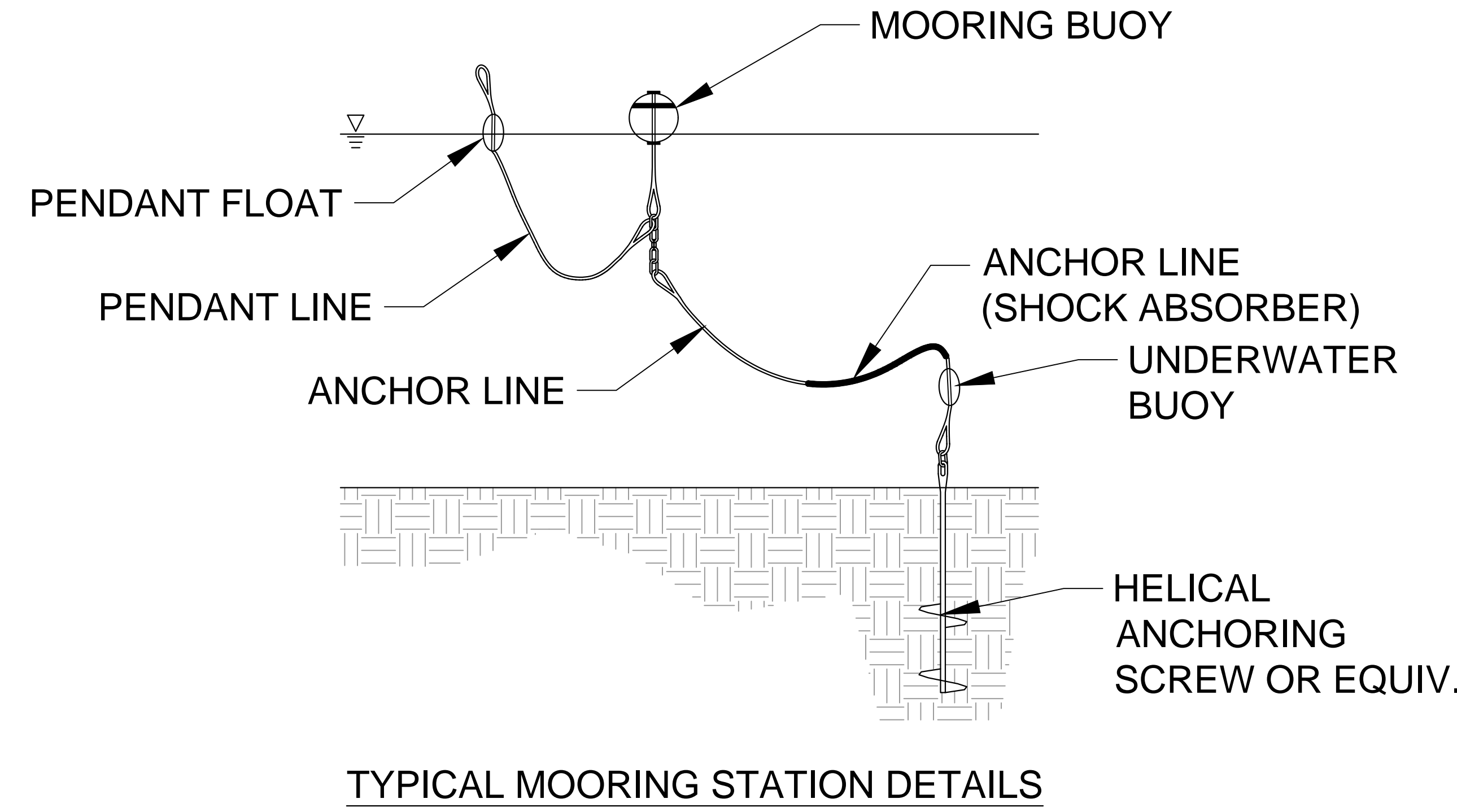
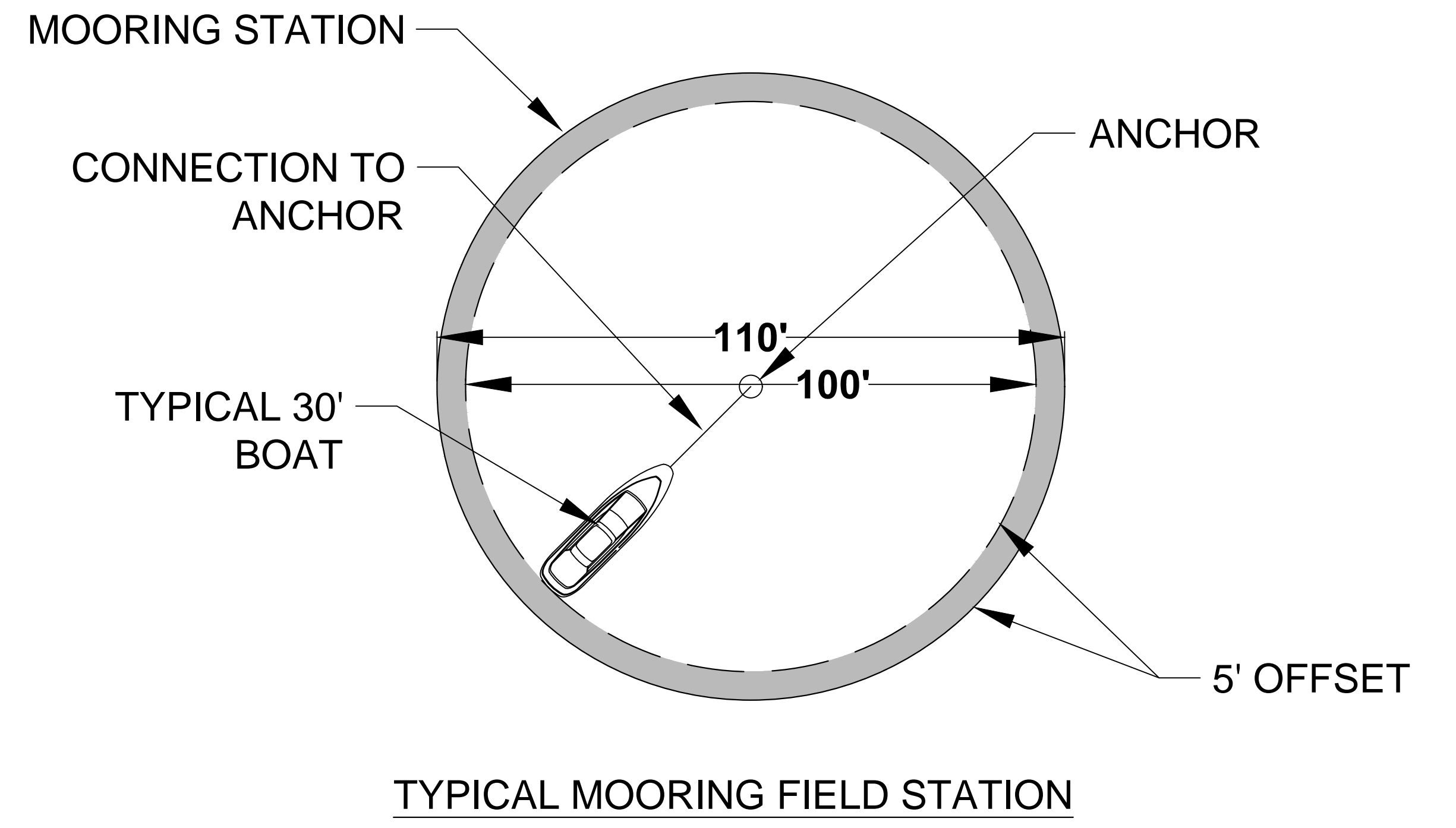
CONTOUR LEGEND

Color	Elevations in Feet (NGVD)
Purple	-2
Red	-3
Orange	-4
Yellow	-5
Green	-6
Cyan	-7
Blue	-8

VESSEL MOORING CIRCLES (DIAMETER 110')

APPROXIMATE LOCATION OF EXISTING CHANNEL MARKERS

CHANNEL BOUNDARY



NOTES:

1. AERIAL DATED 2017 AND IS SOURCED FROM MARTIN COUNTY'S WEBSITE.
2. CHANNEL LOCATIONS BASED ON SHAPEFILE RECEIVED FROM MARTIN COUNTY.
3. CONTOURS BASED ON MORGAN & EKLUND 2006 HYDROGRAPHIC SURVEY.
4. CONTOURS ARE IN FEET AND REFERENCE NGVD29.

