

Investment Program

Noehmi Felix



GOLDEN GATE

HOBE SOUND

JENSEN BEACH

OLD PALM CITY

PORT SALERNO

RIO





ABOUT THE PROGRAM

Now that each CRA area has completed enhanced streetscapes, stormwater, water and sewer infrastructure and roadway improvements, the Agency has introduced an additional strategy to continue the CRA's successful redevelopment journey. The CRA Investment Program was presented and approved by the Board of County Commissioners on 11/2022. This program is a CRA-wide program available to commercial property owners and businesses within the six (6) CRA areas and is intended to facilitate successful redevelopment by addressing individual area needs through targeted programs like the **Property Improvement** and the **Fence/Landscape Program**.



GOLDEN GATE

HOBE SOUND

JENSEN BEACH

OLD PALM CITY

PORT SALERNO

RIO





PROGRAM TYPES

Property Improvement

80% reimbursement of project cost, up to a maximum of \$20,000

Qualifying Activities:

- exterior painting, stucco or siding
- installation of awnings
- new windows and/or doors
- exterior signage
- landscaping
- parking lot improvements
- repair or addition of exterior architectural elements (e.g., addition or improvement of balconies, porches, entryways or arcades)
- lighting
- decorative pavement
- dumpster enclosures
- fencing

Fence/Landscape

80% reimbursement of project cost, up to a maximum of \$10,000

Qualifying Activities

- Landscaping
- Fencing



TARGET AREAS

- **Golden Gate:** Properties in the Core, Corridor, Industrial, and General Subdistricts
- **Hobe Sound:** Properties in the Core, Corridor, and Railroad Corridor Subdistricts
- **Jensen Beach:** All properties within the Jensen Beach CRA boundaries
- **Old Palm City:** All properties within the Old Palm City CRA boundaries
- **Port Salerno:** Properties in the Core Subdistrict and General and Corridor Subdistricts that front Salerno Road
- **Rio:** Properties in the Core or Corridor Subdistricts that also front NE Dixie

Only properties in these target areas are eligible to apply



GOLDEN GATE

HOBE SOUND

JENSEN BEACH

OLD PALM CITY

PORT SALERNO

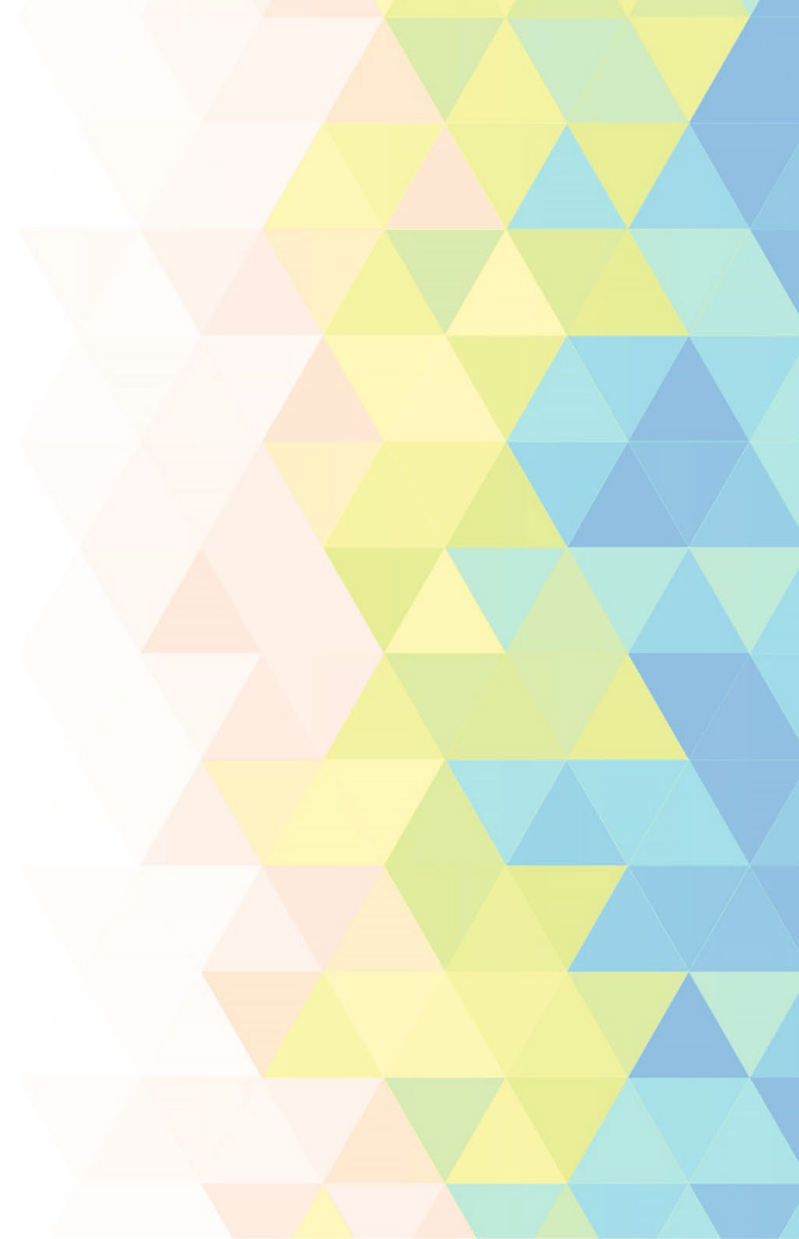
RIO





PROCESS

1. Are you a property owner or do you own a business in the targeted areas?
2. Review and complete the application and submit all required documents.
3. CRA staff will stay in touch and let you know when the application will be presented to the CRA board.
4. Once approved the work can start.
5. Once the project is completed the applicant must provide all required receipts before payment reimbursement.



GOLDEN GATE

HOBE SOUND

JENSEN BEACH

OLD PALM CITY

PORT SALERNO

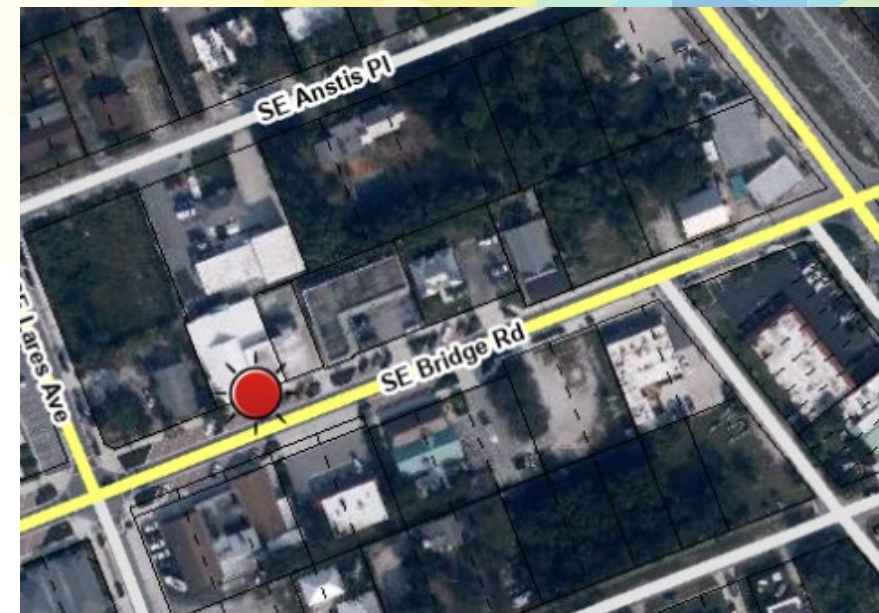
RIO





APPLICANT #001

- **Presented to CRA Board:** February 27, 2023
- **Property Owners:** Michael and Patricia Keeler
- **Location:** 9045 SE Bridge Rd. Hobe Sound, FL 33455
- **Program Type:** Property Improvement
- **Proposed Building Improvements:** Painting of the building, new entrance doors, new awnings



GOLDEN GATE

HOBE SOUND

JENSEN BEACH

OLD PALM CITY

PORT SALERNO

RIO



BEFORE & AFTER



GOLDEN GATE

HOBE SOUND

JENSEN BEACH

OLD PALM CITY

PORT SALERNO

RIO





DURING



GOLDEN GATE



HOBE SOUND



JENSEN BEACH

OLD PALM CITY



PORT SALERNO

RIO



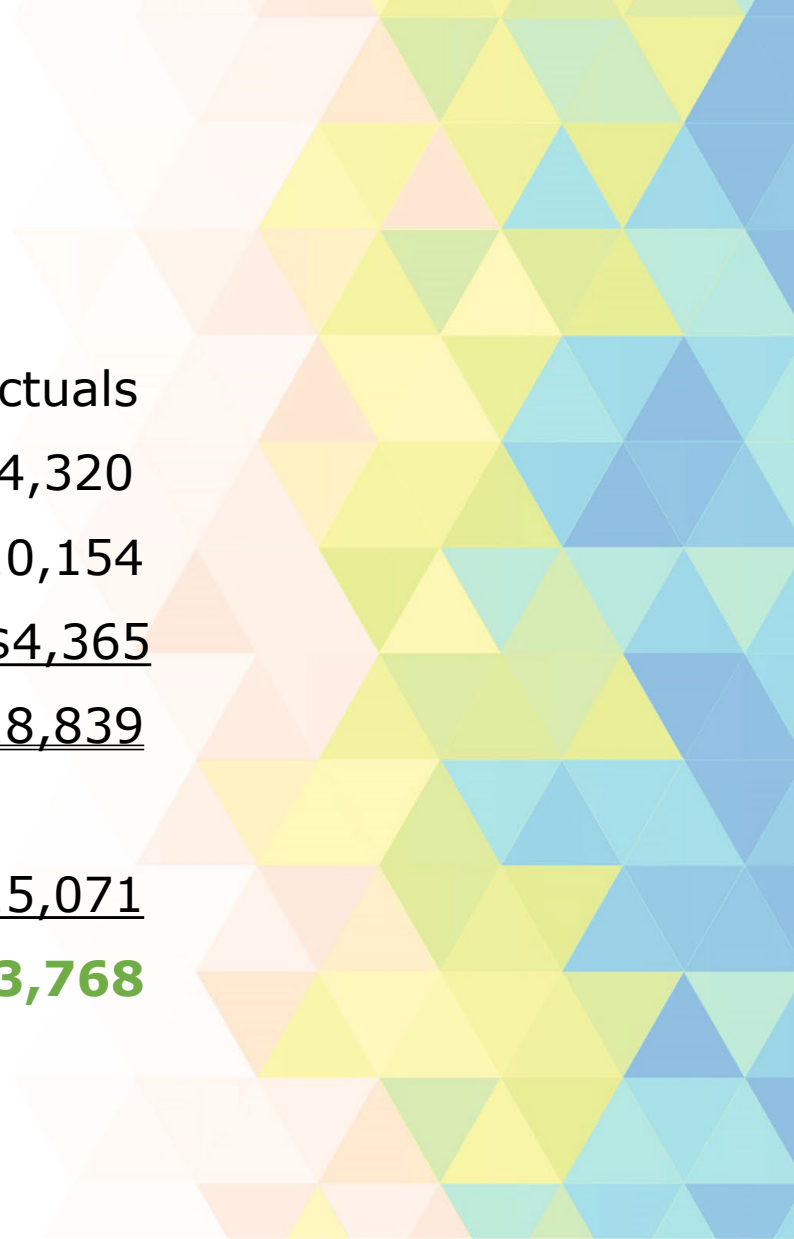
AFTER





PROJECT COST

	Proposed / Actuals
Exterior Paint of the Building / Premium Painters	\$ 4,320 / \$4,320
Replace front doors / Windoz and More	\$10,154 / \$10,154
Awnings / C & C Canvas & Awning Co.	\$ 4,365 / \$4,365
Total	<u>\$18,839 / \$18,839</u>
<u>CRA Investment Program Contribution = 80%</u>	<u>\$15,071 / \$15,071</u>
Business Owner Contribution	\$ 3,768 / \$3,768



GOLDEN GATE

HOBE SOUND

JENSEN BEACH

OLD PALM CITY

PORT SALERNO

RIO



WHERE TO APPLY



The screenshot shows the Martin County Florida website. The header includes the county logo, the text "Martin County Florida Your County. Your Community.", and navigation links for Directory, Jobs, News, Request for Service, and Employees. A search bar is present with the text "Enter Keywords". Below the header is a menu with categories: HOME, RESIDENTS, BUSINESS, DEPARTMENTS, THINGS TO DO, I WANT TO, SERVICES, TRANSPARENCY, and DOCUMENTS. The main content area shows the breadcrumb "Departments > Administration > Community Redevelopment Agency > CRA Investment Programs" and the title "CRA INVESTMENT PROGRAM". On the left is a sidebar with links: Program Fact Sheet, Application Process, Application Checklist, and Application. The main content has an "OVERVIEW" section with text about the program and a "TARGET AREAS PER CRA:" section with a list of areas: Golden Gate, Hobe Sound, Jensen Beach, Old Palm City, Port Salerno, and Rio.

Packet (in the back/Admin building)

OR

martin.fl.us/CRAInvestmentProgram

OR



GOLDEN GATE

HOBE SOUND

JENSEN BEACH

OLD PALM CITY

PORT SALERNO

RIO





Thank you! Any Questions?



This document may be reproduced upon request in an alternative format by contacting the County ADA Coordinator (772) 320-3131, the County Administration Office (772) 288-5400, Florida Relay 711, or by completing our accessibility feedback form at: www.martin.fl.us/accessibility-feedback



GOLDEN GATE

HOBE SOUND

JENSEN BEACH

OLD PALM CITY

PORT SALERNO

RIO

