

Investment Program

**Project Completion Report
Applicant No. 010 – Jensen Beach CRA
Property Improvement
1930 NE Jensen Beach Boulevard
ACJB LLC**



GOLDEN GATE

HOBE SOUND

JENSEN BEACH

OLD PALM CITY

PORT SALERNO

RIO





ABOUT THE PROGRAM

Now that each CRA area has completed enhanced streetscapes, stormwater, water and sewer infrastructure and roadway improvements, the Agency has introduced an additional strategy to continue the CRA's successful redevelopment journey. The CRA Investment Program was presented and approved by the Board of County Commissioners on 11/22/2022. This program is a CRA-wide program available to commercial property owners and businesses within the six (6) CRA areas and is intended to facilitate successful redevelopment by addressing individual area needs through targeted programs like the **Property Improvement** and the **Fence/Landscape Program**.



GOLDEN GATE

HOBE SOUND

JENSEN BEACH

OLD PALM CITY

PORT SALERNO

RIO





PROGRAM TYPES

Property Improvement

80% reimbursement of project cost, up to a maximum of \$20,000

Qualifying Activities:

- exterior painting
- installation of awnings
- new windows and/or doors
- exterior signage
- landscaping
- parking lot improvements
- repair or addition of exterior architectural elements (e.g., addition or improvement of balconies, porches, entryways or arcades)
- lighting
- decorative pavement
- dumpster enclosures
- fencing

Fence/Landscape

80% reimbursement of project cost, up to a maximum of \$10,000

Qualifying Activities

- Landscaping
- Fencing



TARGET AREAS

- **Golden Gate:** Properties in the Core, Corridor, Industrial, and General Subdistricts
- **Hobe Sound:** Properties in the Core, Corridor, and Railroad Corridor Subdistricts
- **Jensen Beach:** **All properties** within the Jensen Beach CRA boundaries
- **Old Palm City:** All properties within the Old Palm City CRA boundaries
- **Port Salerno:** Properties in the Core Subdistrict and General and Corridor Subdistricts that front Salerno Road
- **Rio:** Properties in the Core or Corridor Subdistricts that also front NE Dixie

Only properties in these target areas are eligible to apply



GOLDEN GATE

HOBE SOUND

JENSEN BEACH

OLD PALM CITY

PORT SALERNO

RIO





PROCESS

1. Are you a property owner or do you own a business in the targeted areas?
2. Review and complete the application and submit all required documents.
3. CRA staff will stay in touch and let you know when the application will be presented to the CRA board.
4. Once approved the work can start.
5. Once the project is completed the applicant must provide all required receipts before payment reimbursement.



GOLDEN GATE

HOBE SOUND

JENSEN BEACH

OLD PALM CITY

PORT SALERNO

RIO





APPLICANT #010

- **Presented to CRA Board:** March 25, 2024
- **Improvements completed:** May 2024
- **Property Owner: ACJB LLC** (Paul & Linda Kurkechian)
- **Location:** 1930 NE Jensen Beach Blvd (JB CRA)
- **Program Type:** Property Improvement
- **Building Improvements Completed:** Paint Exterior of Building **Total Project Cost:** \$9,500
- **Reimbursed:** \$7,600 - June 2024
- **Owner Contribution:** \$1,900

Comments from the applicant:

- *We love the look of the building and the fabulous paint color.*
- *We have had several comments on how nice the building looks, and our tenants love it!*
- *Highly recommend the CRA Investment We would not have been able to update our look without the assist from Martin County.*



GOLDEN GATE

HOBE SOUND

JENSEN BEACH

OLD PALM CITY

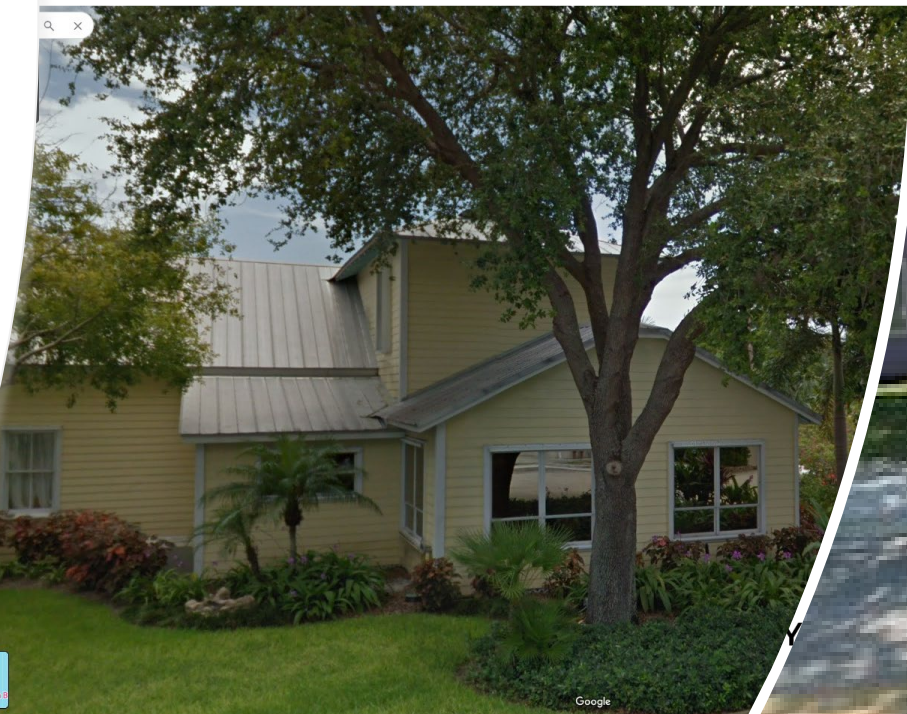
PORT SALERNO

RIO





Before and After



GOLDEN GATE

HOBE S



Google

WHERE TO APPLY



The screenshot shows the Martin County Florida website. At the top, there is a navigation bar with a search box labeled "Enter Keywords" and a language dropdown set to "English". The main header includes the Martin County logo and the text "Martin County Florida - Your County. Your Community." Below this is a menu with categories like HOME, RESIDENTS, BUSINESS, DEPARTMENTS, THINGS TO DO, I WANT TO, SERVICES, TRANSPARENCY, and DOCUMENTS. The main content area is titled "CRA INVESTMENT PROGRAM" and includes a sidebar with links for "Program Fact Sheet", "Application Process", "Application Checklist", and "Application". The main text under "OVERVIEW" describes the program's goals and lists "TARGET AREAS PER CRA" with bullet points for Golden Gate, Hobe Sound, Jensen Beach, Old Palm City, Port Salerno, and Rio.

Packet (in the back/Admin building)

OR

martin.fl.us/CRAInvestmentProgram

OR



GOLDEN GATE

HOBE SOUND

JENSEN BEACH

OLD PALM CITY

PORT SALERNO

RIO

