

Investment Program

Project Completion Report
Applicant No. 004 – Jensen Beach CRA
1969 NE Jensen Beach Blvd
Driftwood Industrial LLC



GOLDEN GATE

HOBE SOUND

JENSEN BEACH

OLD PALM CITY

PORT SALERNO

RIO





ABOUT THE PROGRAM

Now that each CRA area has completed enhanced streetscapes, stormwater, water and sewer infrastructure and roadway improvements, the Agency has introduced an additional strategy to continue the CRA's successful redevelopment journey. The CRA Investment Program was presented and approved by the Board of County Commissioners on 11/2022. This program is a CRA-wide program available to commercial property owners and businesses within the six (6) CRA areas and is intended to facilitate successful redevelopment by addressing individual area needs through targeted programs like the **Property Improvement** and the **Fence/Landscape Program**.



GOLDEN GATE

HOBE SOUND

JENSEN BEACH

OLD PALM CITY

PORT SALERNO

RIO





PROGRAM TYPES

Property Improvement

80% reimbursement of project cost, up to a maximum of \$20,000

Qualifying Activities:

- exterior painting, stucco or siding
- installation of awnings
- new windows and/or doors
- exterior signage
- landscaping
- parking lot improvements
- repair or addition of exterior architectural elements (e.g., addition or improvement of balconies, porches, entryways or arcades)
- lighting
- decorative pavement
- dumpster enclosures
- fencing

Fence/Landscape

80% reimbursement of project cost, up to a maximum of \$10,000

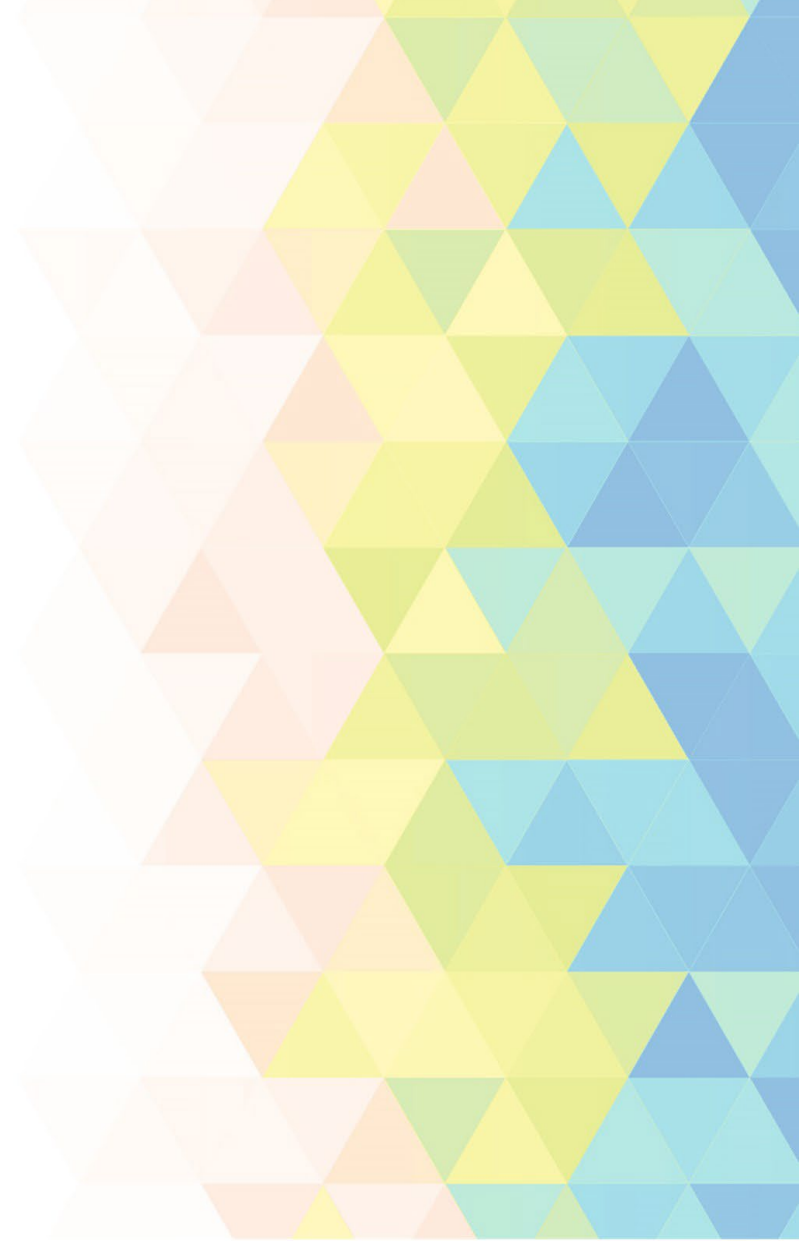
Qualifying Activities

- Landscaping
- Fencing



PROCESS

1. Are you a property owner or do you own a business in the targeted areas?
2. Review and complete the application and submit all required documents.
3. CRA staff will stay in touch and let you know when the application will be presented to the CRA board.
4. Once approved the work can start.
5. Once the project is completed the applicant must provide all required receipts before payment reimbursement.



GOLDEN GATE

HOBE SOUND

JENSEN BEACH

OLD PALM CITY

PORT SALERNO

RIO





APPLICANT #004

- **Presented to CRA Board:** April 24, 2023
- **Improvements completed:** January 2024
- **Property Owner:** Driftwood Industrial LLC
- **Location:** 1969 NE Jensen Beach Blvd
- **Program Type:** Property Improvement
- **Building Improvements Completed:** Paint entire plaza (\$16,350), Canopy over Kai's Pizza (\$7,750), New glass at Welcome Home Realty (\$17,300) =
Total Project Cost: \$41,400
- **Reimbursed:** \$20,000 – January 2024
- **Owner Contribution:** \$21,400

Comments from the applicant:

- *The new vibrant colors have spruced up the main street of downtown Jensen Beach.*
- *New glass doors and windows provide a safer place and more inviting storefront.*
- *The new awnings provide a more cohesive look and shade for patrons and pedestrians.*





BEFORE PICTURES



GOLDEN GATE



HOBE SOUND



JENSEN BEACH



OLD PALM CITY



PORT SALERNO

RIO

AFTER PICTURES





BEFORE AND AFTER PICTURES

WHERE TO APPLY



The screenshot shows the Martin County Florida website. The header includes the county logo, the text "Martin County Florida Your County. Your Community.", and navigation links for Directory, Jobs, News, Request for Service, and Employees. A search bar is present with the text "Enter Keywords". Below the header is a menu with categories: HOME, RESIDENTS, BUSINESS, DEPARTMENTS, THINGS TO DO, I WANT TO, SERVICES, TRANSPARENCY, and DOCUMENTS. The main content area shows the breadcrumb "Departments > Administration > Community Redevelopment Agency > CRA Investment Programs" and the title "CRA INVESTMENT PROGRAM". A sidebar on the left contains links for "Program Fact Sheet", "Application Process", "Application Checklist", and "Application". The main content area has an "OVERVIEW" section with text about the program and a "TARGET AREAS PER CRA:" section with a list of areas: Golden Gate, Hobe Sound, Jensen Beach, Old Palm City, Port Salerno, and Rio.

Packet (in the back/Admin building)

OR

martin.fl.us/CRAInvestmentProgram

OR



GOLDEN GATE

HOBE SOUND

JENSEN BEACH

OLD PALM CITY

PORT SALERNO

RIO

