

Department of Health

COVID-19 Update
Martin County



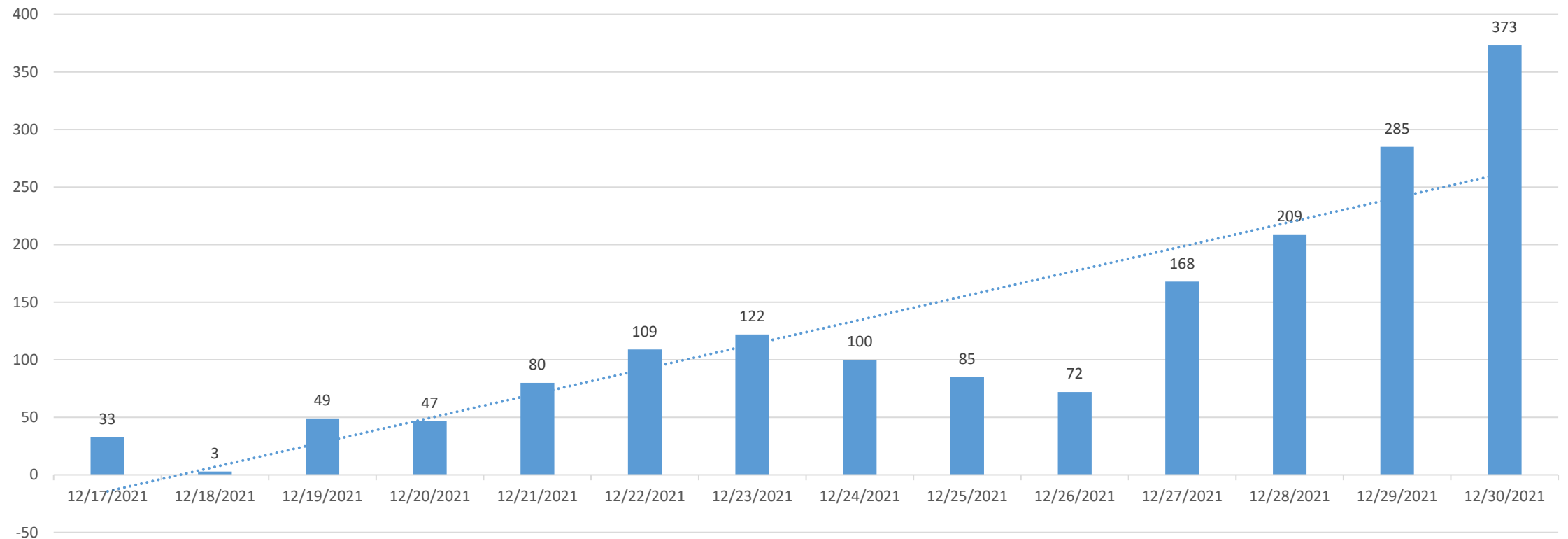
December 31, 2021

Martin County Update

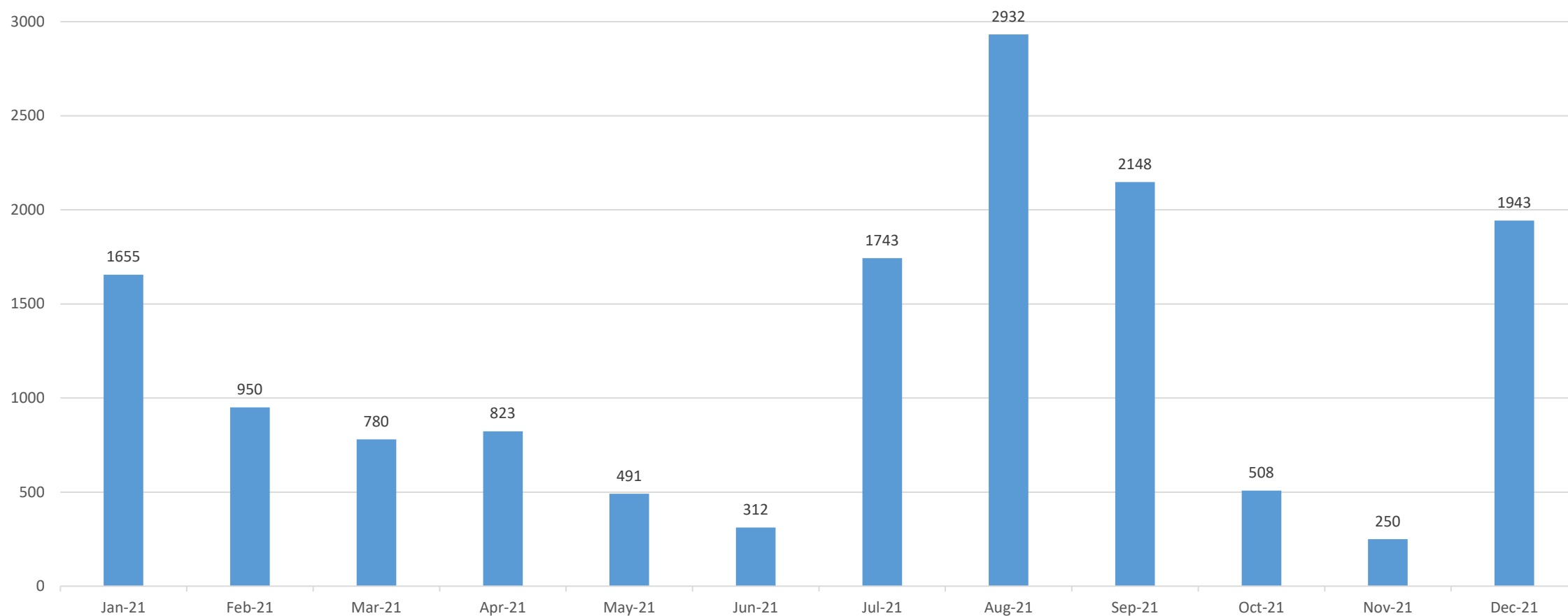
| Martin - FL residents only | 24-Dec | 25-Dec | 26-Dec | 27-Dec | 28-Dec | 29-Dec | 30-Dec | 7-day average |
|----------------------------|--------|--------|--------|--------|--------|--------|--------|---------------|
| New cases by day | 100 | 85 | 72 | 168 | 209 | 285 | 373 | 185 |
| Positivity Rate | 13% | 20% | 16% | 24% | 24% | 21% | 32% | 21% |

| | |
|-------------------------------------|--------|
| Cumulative total cases 2020-2021 | 22,335 |
| Cumulative cases for September 2021 | 2,148 |
| Cumulative cases for October 2021 | 508 |
| Cumulative cases for November 2021 | 250 |
| Cumulative cases for December 2021 | 1,943 |

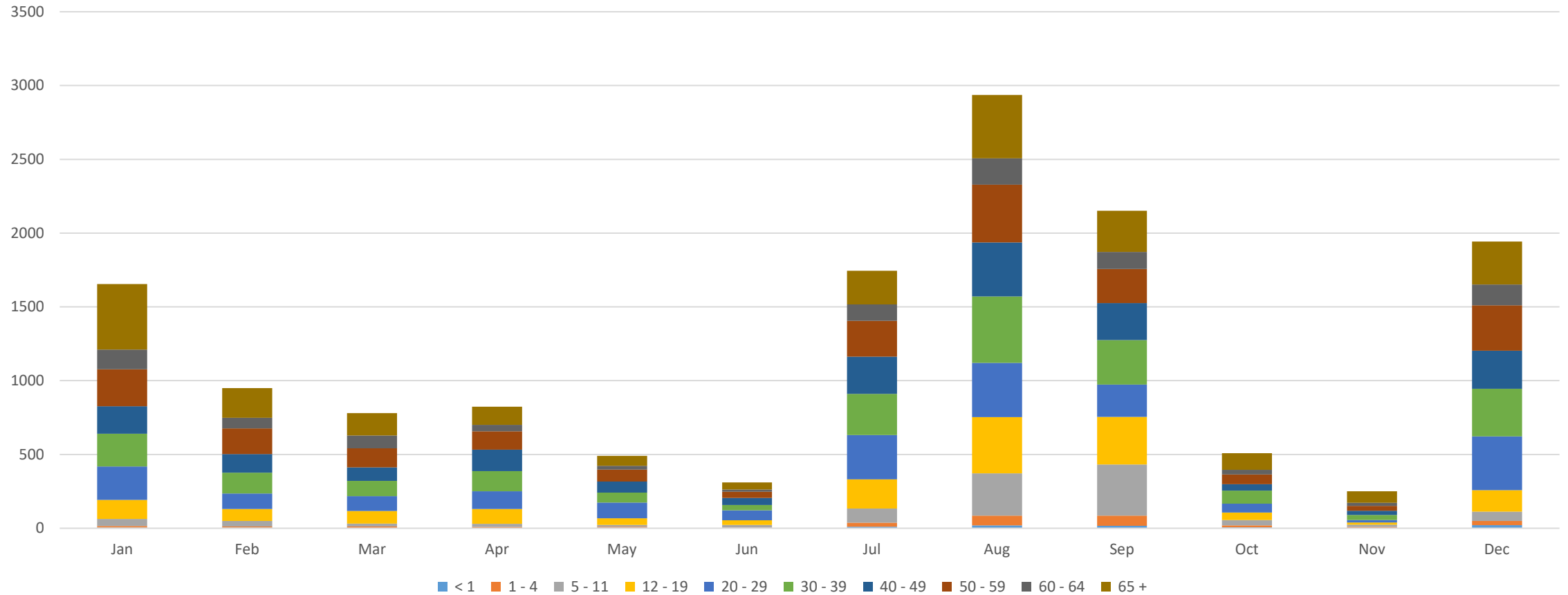
Martin Cases, Previous 14 Days



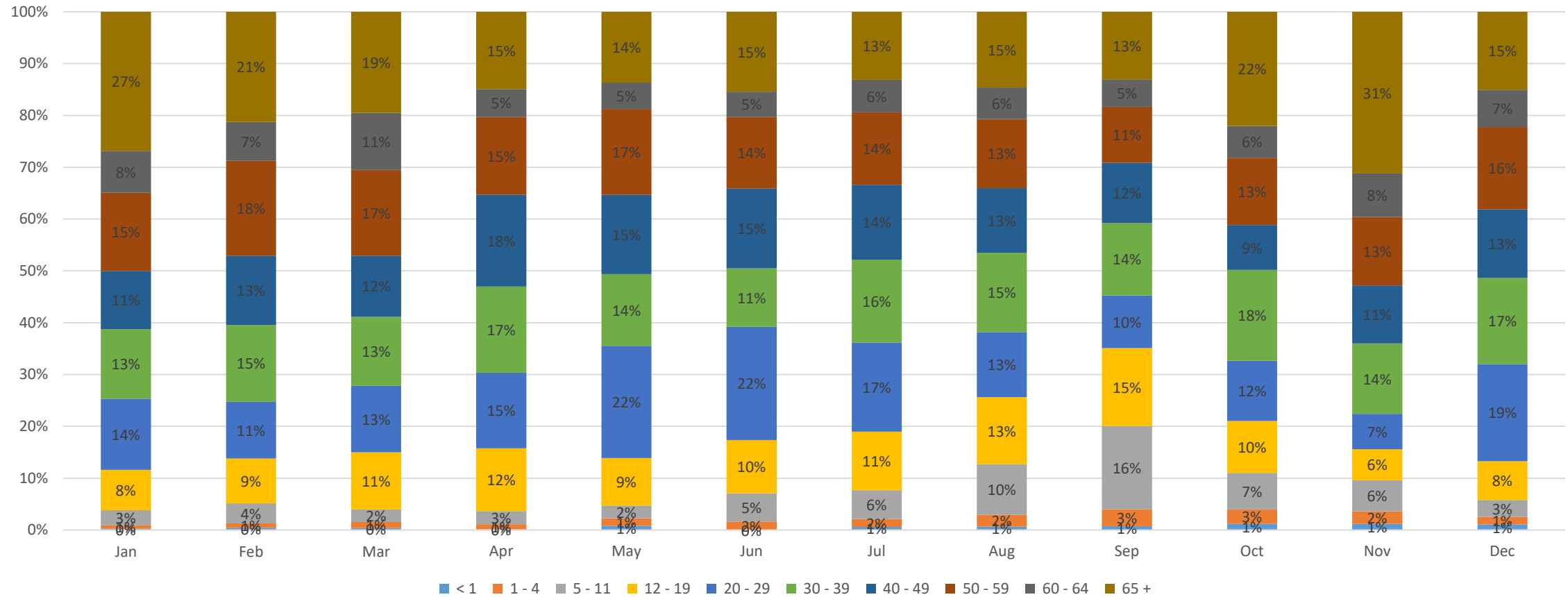
Martin Cases by Month, 2021



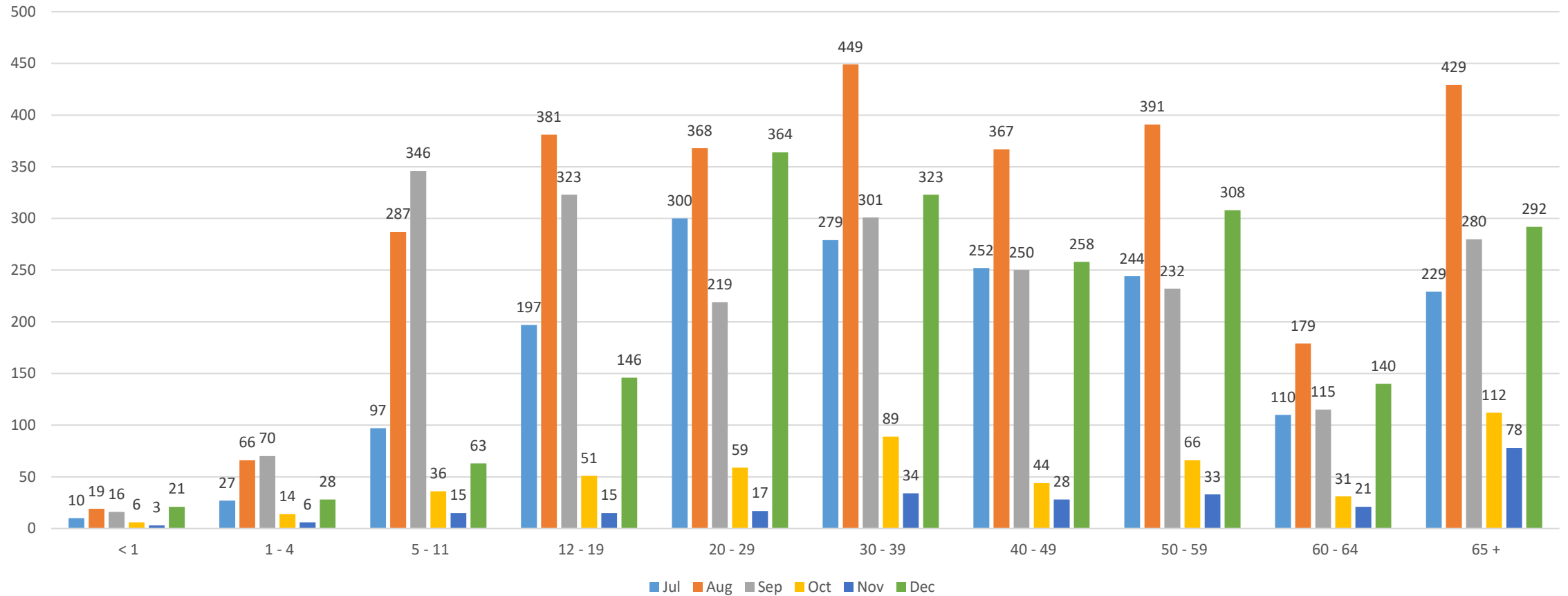
Martin Monthly Cases by Age Group, 2021



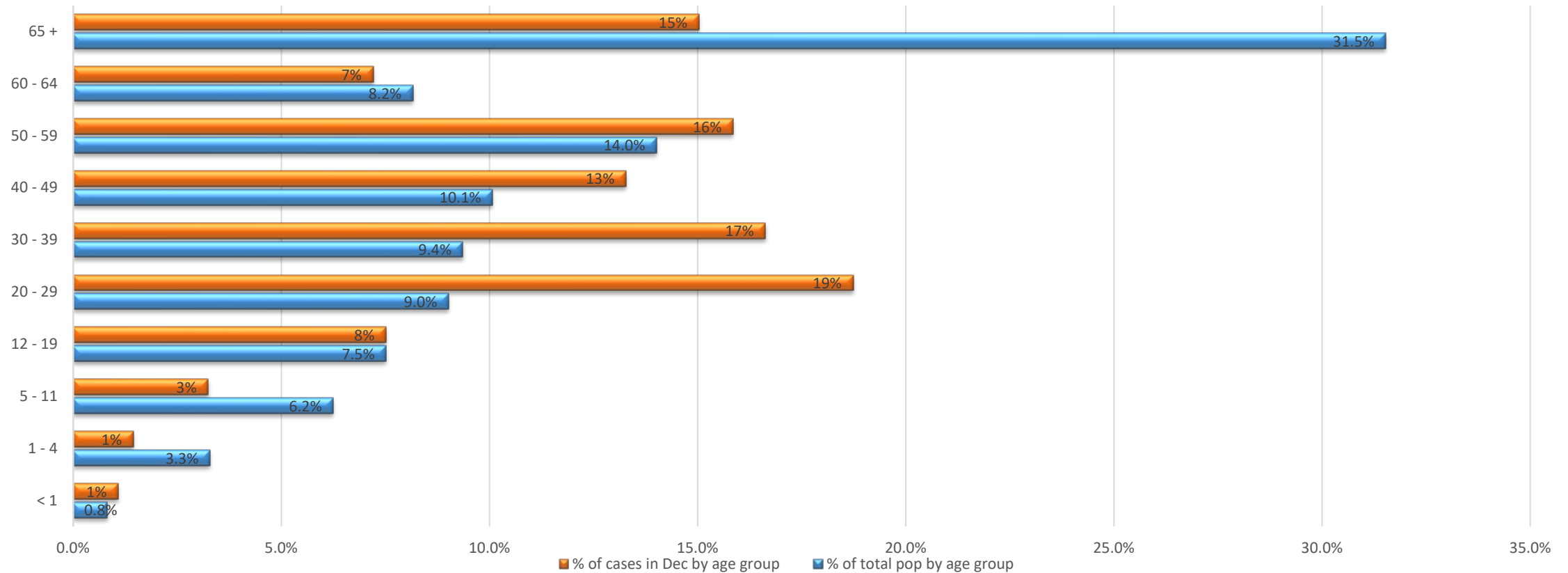
Martin Monthly Percentage of Cases by Age Group, 2021



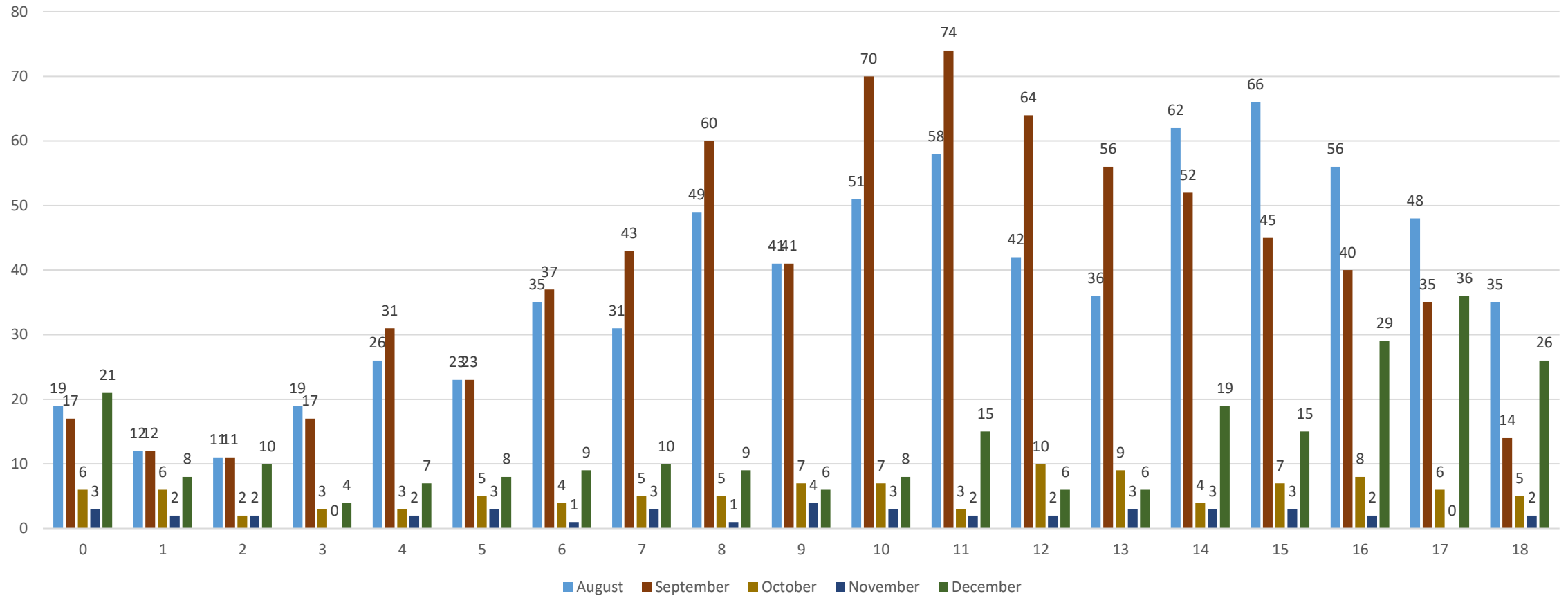
Martin Monthly Cases by Age Group, Jul-Dec 2021



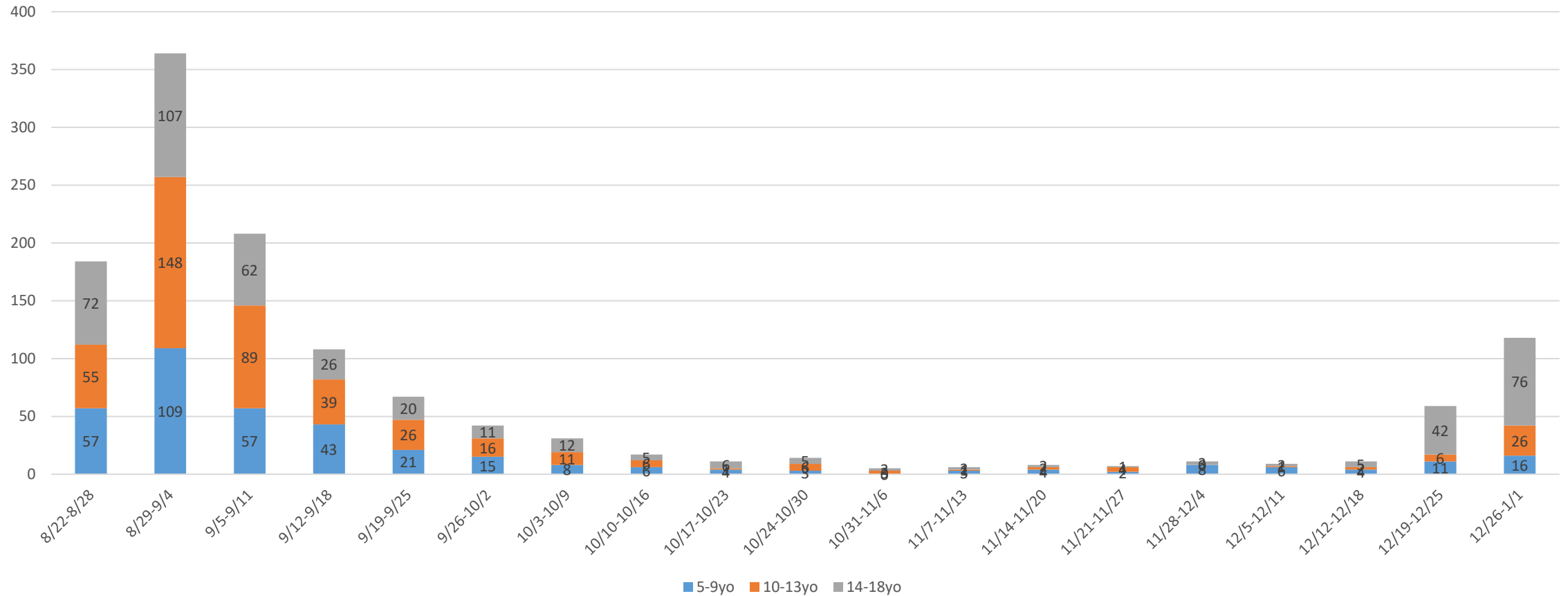
Martin Percentage of Cases by Age Group vs Percentage Population, Dec 2021



Martin Cases by Age 0-18yo, Aug-Dec 2021

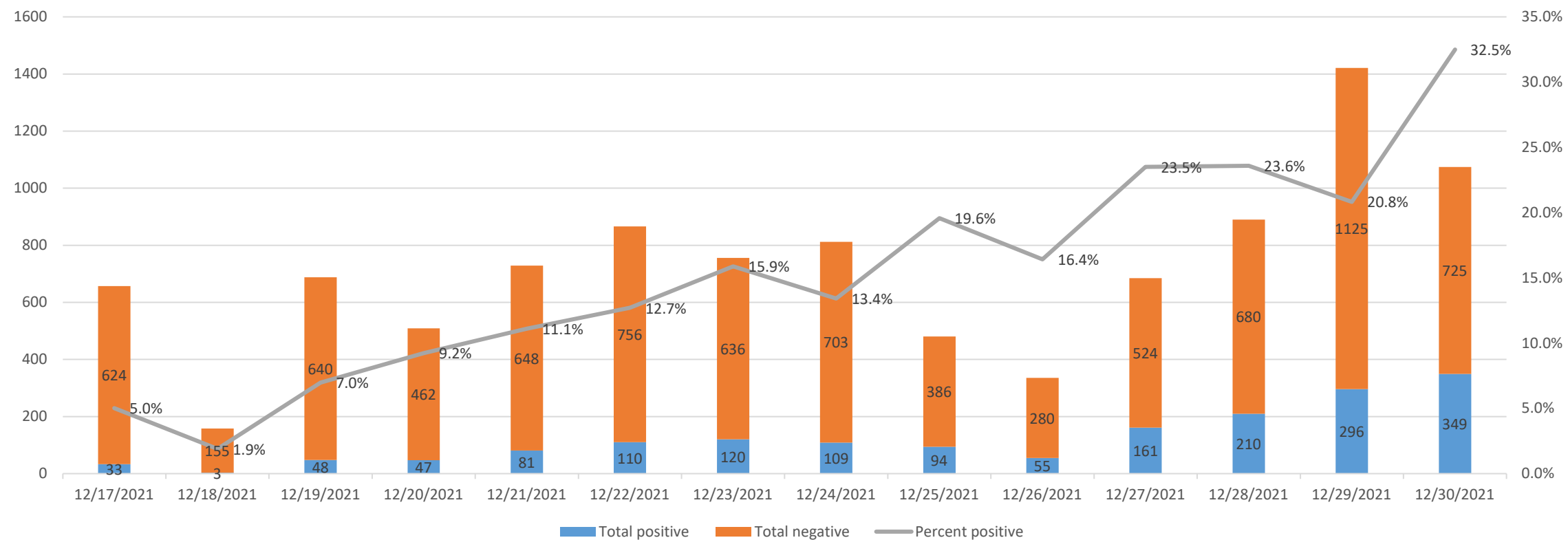


Martin Weekly Cases by Age Groups 5-18



Positivity Rate, Previous 14 Days

Lab results and Positivity, Martin County, Previous 14 Days



Vaccination Rates to Date, Martin County

| Age group | 2021 population | First dose | Percent with first dose | Series completed | Percent with complete series | Additional dose | Percent with additional dose | Total vaccinated | Percent vaccinated |
|----------------|-----------------|------------|-------------------------|------------------|------------------------------|-----------------|------------------------------|------------------|--------------------|
| <1 | 1,336 | 0 | 0% | 0 | 0% | 0 | 0% | 0 | 0% |
| 1-4 | 5,345 | 0 | 0% | 0 | 0% | 0 | 0% | 0 | 0% |
| 5-11 | 10,168 | 383 | 4% | 732 | 7% | 0 | 0% | 1,115 | 11% |
| 12-19 | 12,236 | 737 | 6% | 4,801 | 39% | 514 | 4% | 6,052 | 50% |
| 20-29 | 14,674 | 1,238 | 8% | 5,033 | 34% | 901 | 6% | 7,172 | 49% |
| 30-39 | 15,237 | 1,180 | 8% | 6,205 | 41% | 1,394 | 9% | 8,779 | 58% |
| 40-49 | 16,392 | 1,152 | 7% | 6,985 | 43% | 2,342 | 14% | 10,479 | 64% |
| 50-59 | 22,807 | 1,703 | 7% | 9,747 | 43% | 5,376 | 24% | 16,826 | 74% |
| 60-64 | 13,285 | 1,152 | 9% | 5,419 | 41% | 4,737 | 36% | 11,308 | 85% |
| 65+ | 51,330 | 3,643 | 7% | 18,090 | 35% | 22,199 | 43% | 43,932 | 86% |
| All age groups | 162,810 | 11,188 | 7% | 57,012 | 35% | 37,463 | 23% | 105,663 | 65% |

COVID-19 Resources

Vaccination

Where to Get Vaccinated:

Health Department, Local Pharmacies
& Private Healthcare Providers

DOH-Martin:

Monday and Thursday, by appt.
772-221-4000, option 3

Find a provider near you:

www.Vaccines.gov

Testing

Drive thru:

DOH-Martin provided by
Curative.

Book appt. online at

www.Curative.com

More resources:

www.FIHealthCOVID19.gov

General Reports & Monoclonal Treatment Sites

www.FIHealthCOVID19.gov