

Department of Health

COVID-19 Update
Martin County



October 19, 2021

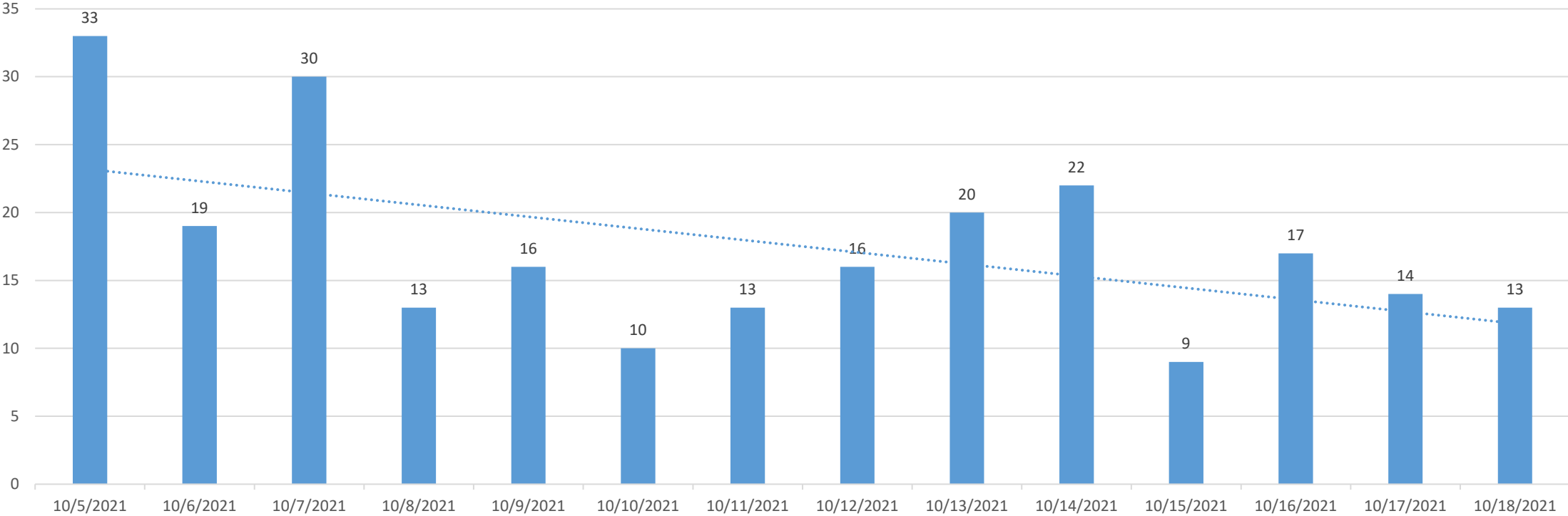
Martin County Update

Martin - FL residents only	12-Oct	13-Oct	14-Oct	15-Oct	16-Oct	17-Oct	18-Oct	7-day average
New cases by day	16	20	22	9	17	14	13	16
Positivity Rate	5%	3%	4%	2%	6%	5%	5%	4%

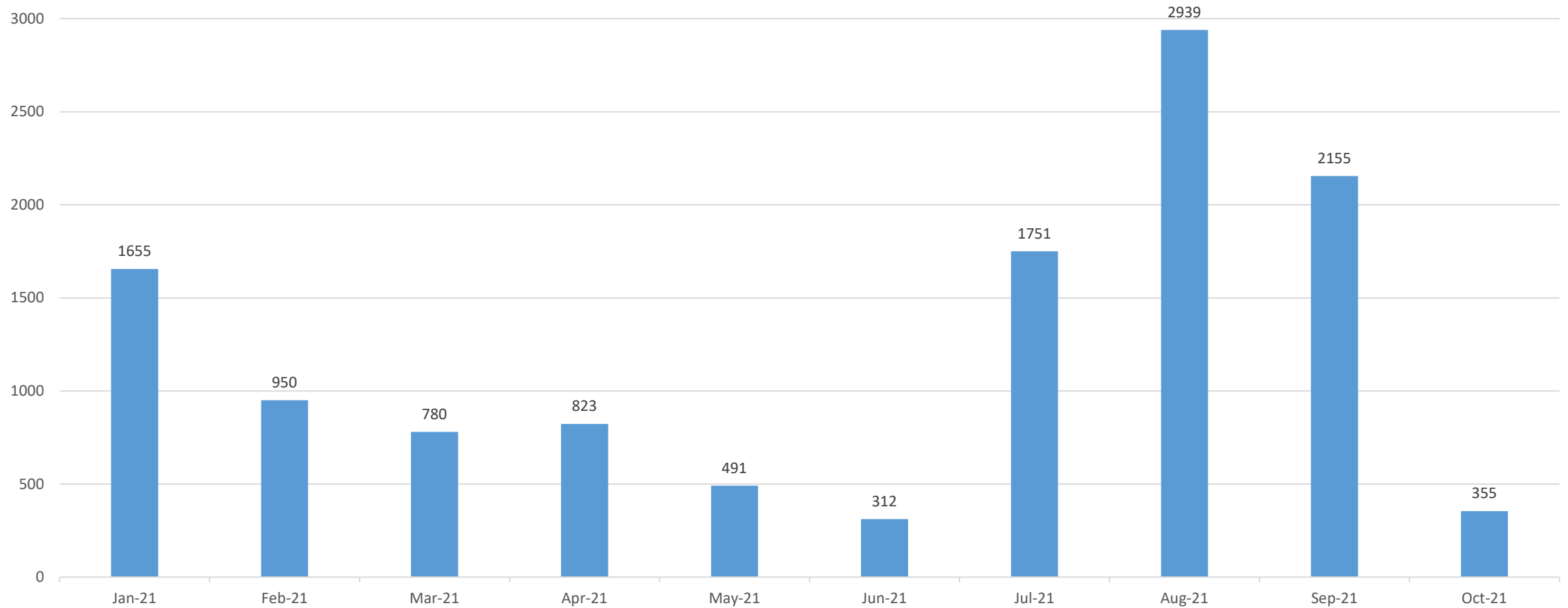
Total cases 2020-2021	20,001
Total cases for July 2021	1,751
Total cases for August 2021	2,939
Total cases for September 2021	2,155
Total cases for October 2021	355

Martin Cases, Previous 14 Days

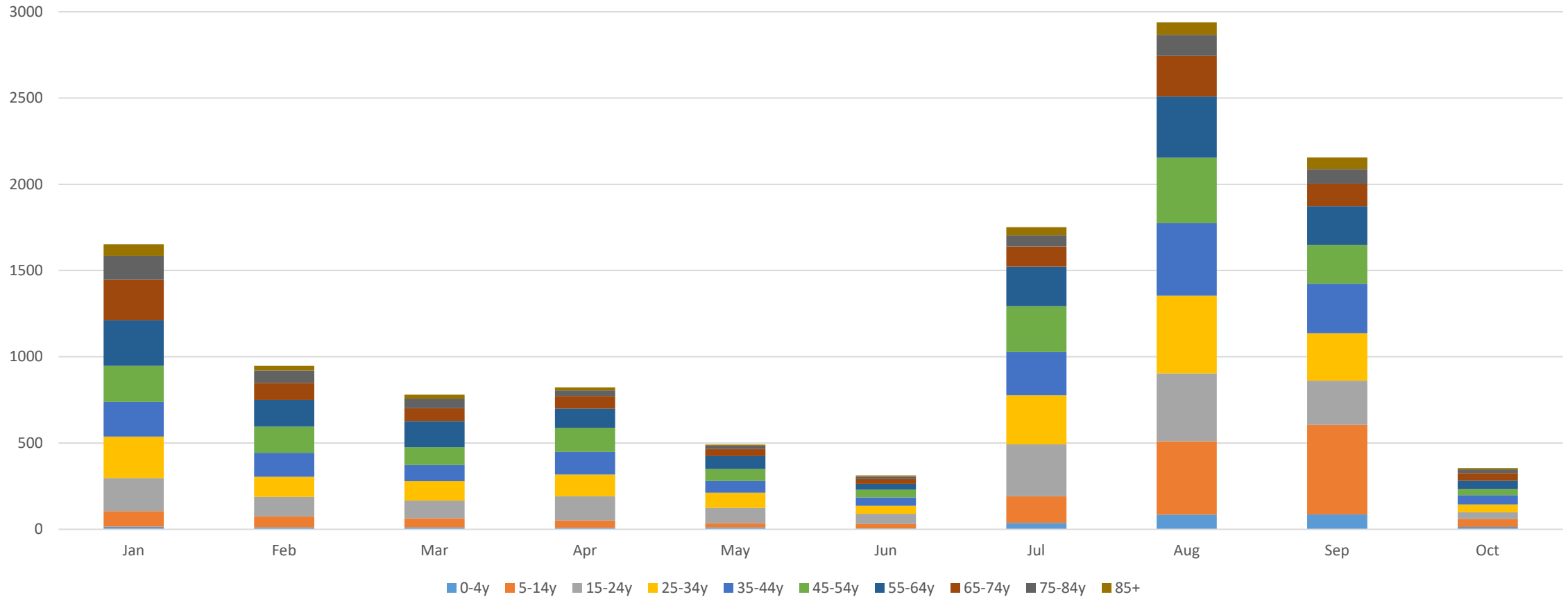
COVID-19 Cases, Martin County, Previous 14 Days



Martin Cases by Month, 2021

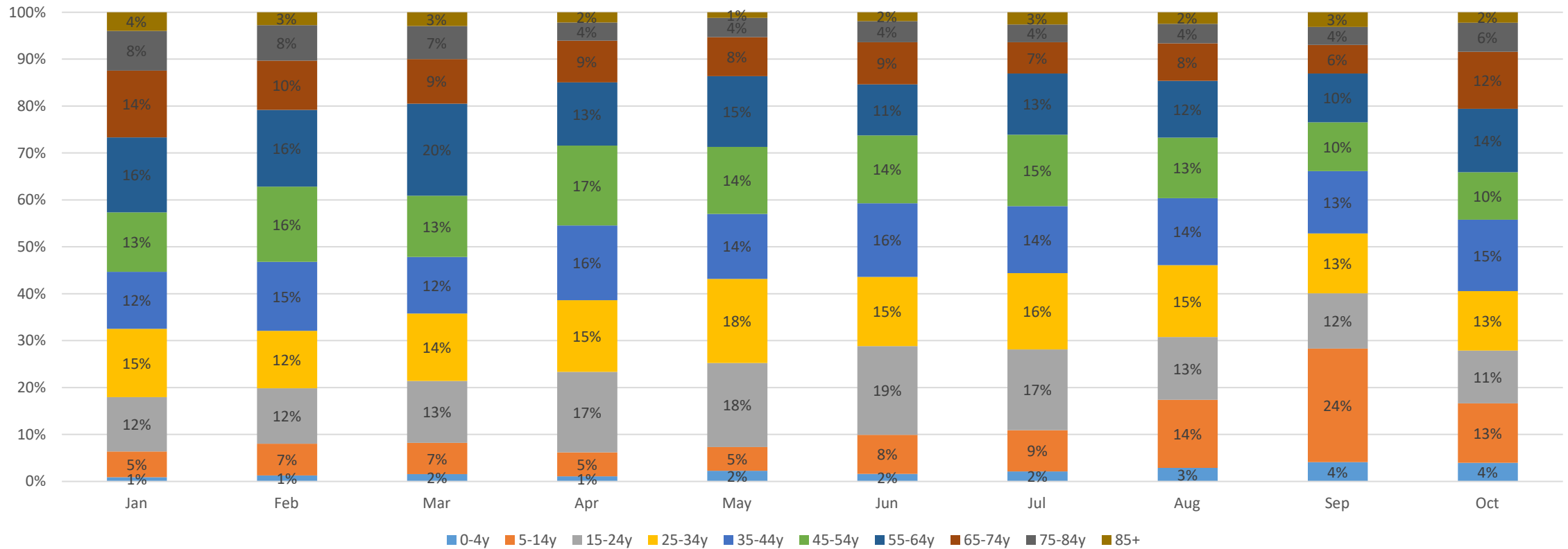


Martin Monthly Cases by Age Group, 2021

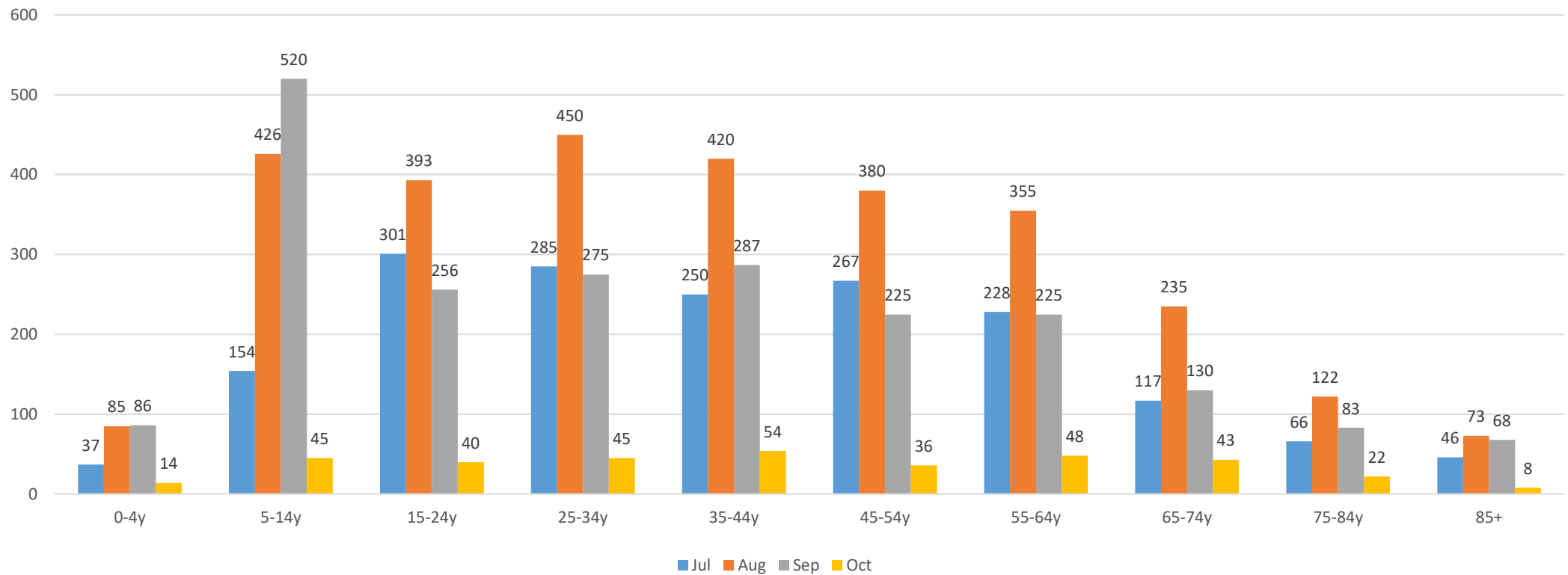


Martin Monthly Percentage of Cases by Age Group, 2021

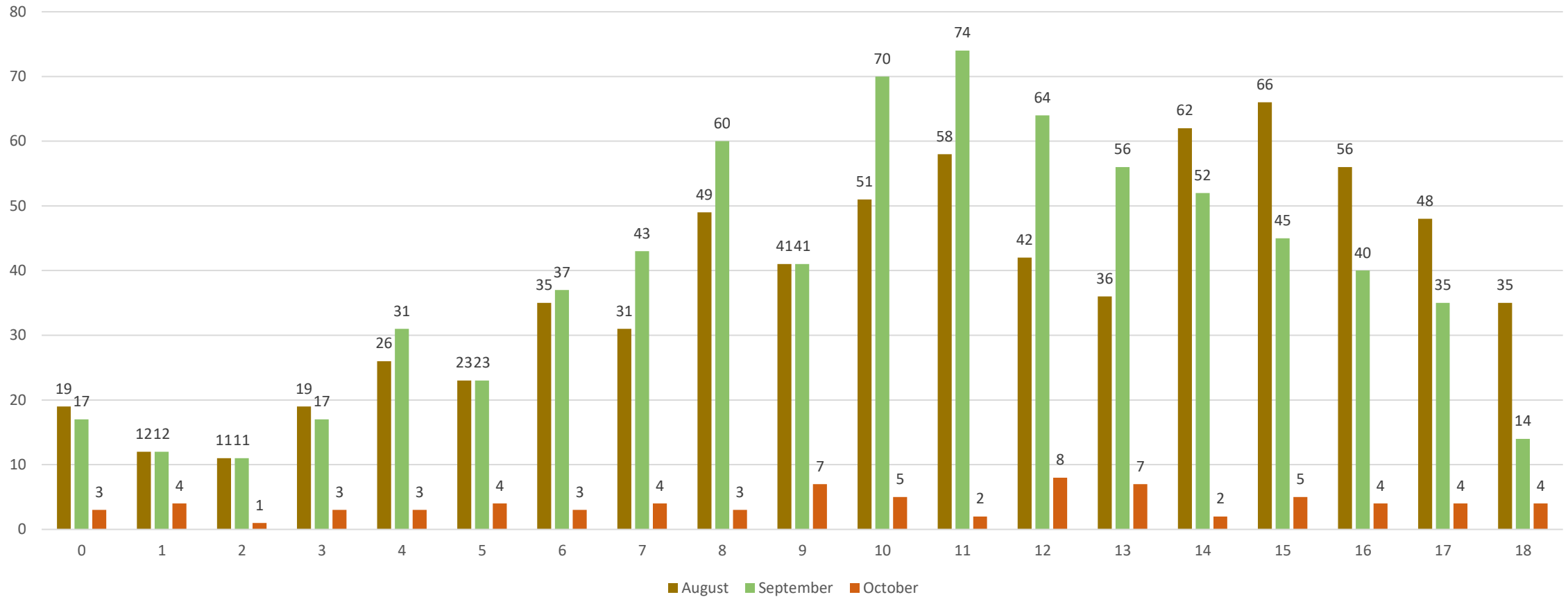
Percentage of cases by age group, Martin County, 2021



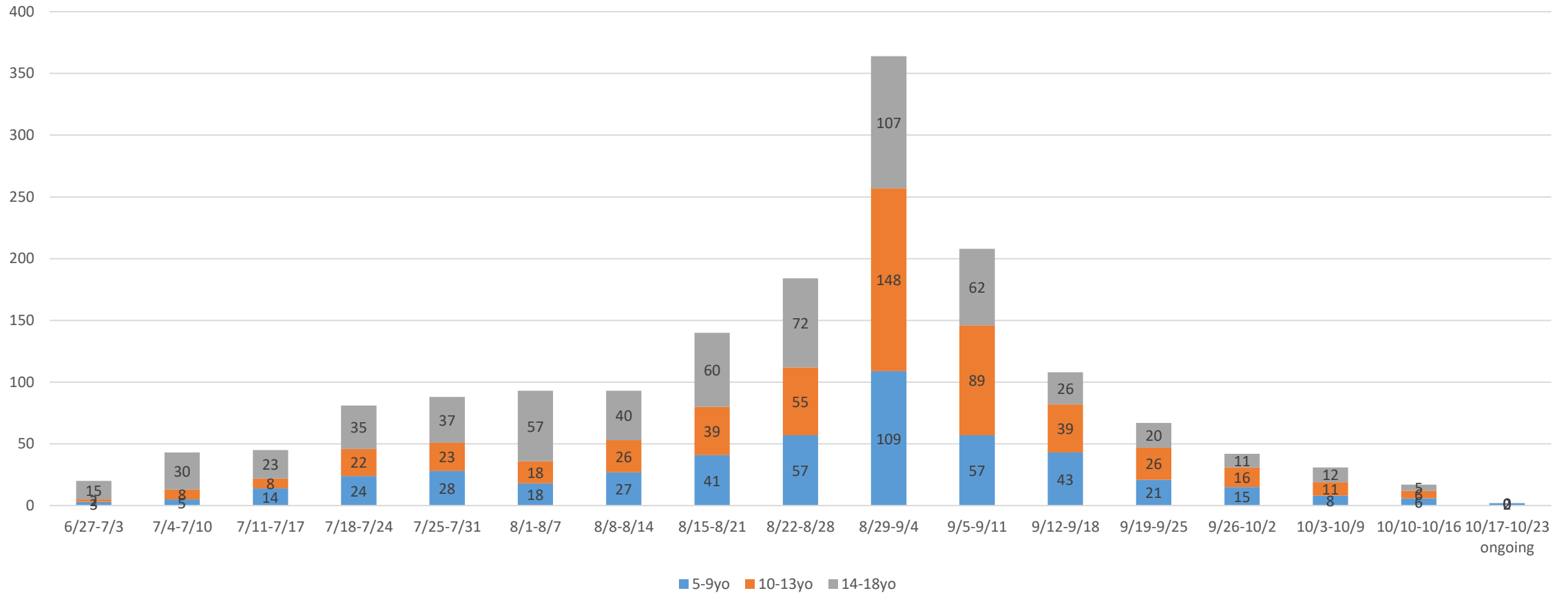
Martin Monthly Cases by Age Group, Jul-Oct 2021



Martin Cases by Age 0-18yo, Aug-Oct 2021

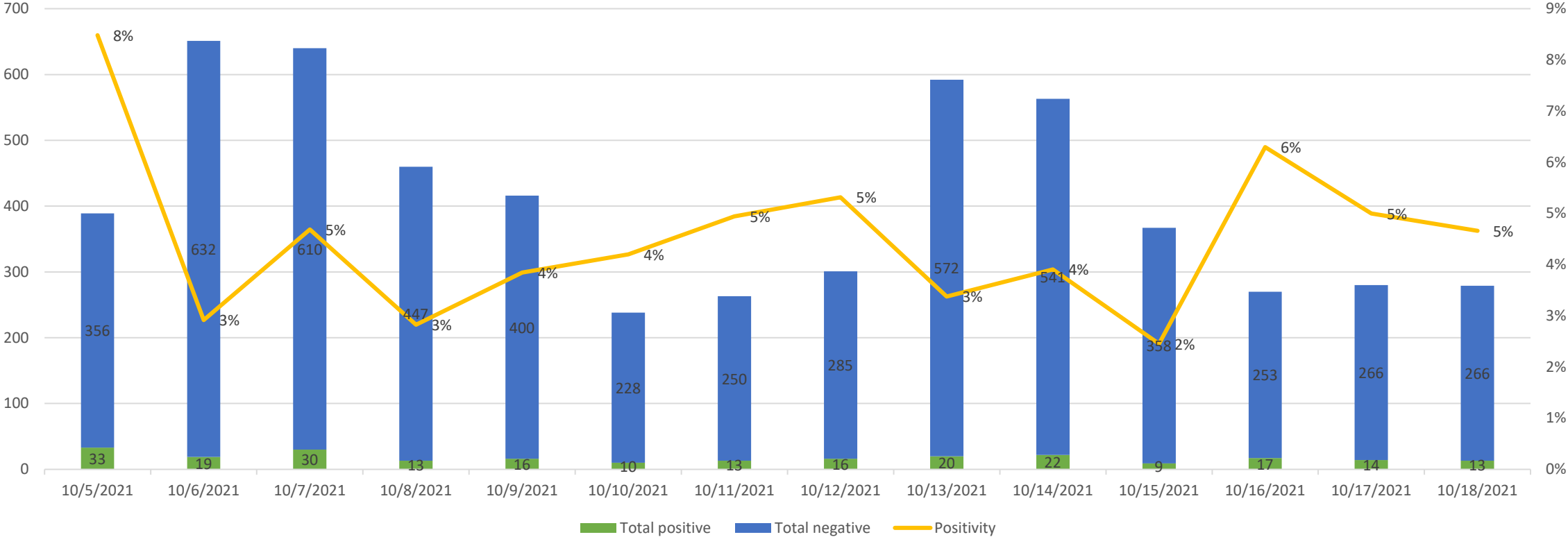


Martin Weekly Cases by Age Groups 5-18



Positivity Rate, Previous 14 Days

Lab results and Positivity, Martin County, Previous 14 Days



Vaccination Rates to Date, Martin County

Age group	2021 population	First dose	Percent with first dose	Series completed	Percent with complete series	Total vaccinated	Percent vaccinated
<1	1,336	0	0%	0	0%	0	0%
1-4	5,345	0	0%	0	0%	0	0%
5-9	7,074	0	0%	0	0%	0	0%
10-11	3,094	0	0%	0	0%	0	0%
12-14	4,641	269	6%	1,720	37%	1,989	43%
15-19	7,595	458	6%	3,328	44%	3,786	50%
20-24	6,989	558	8%	2,903	42%	3,461	50%
25-29	7,685	506	7%	2,532	33%	3,038	40%
30-34	7,599	578	8%	3,155	42%	3,733	49%
35-39	7,638	565	7%	3,789	50%	4,354	57%
40-44	7,434	544	7%	4,067	55%	4,611	62%
45-49	8,958	534	6%	4,590	51%	5,124	57%
50-54	10,239	735	7%	6,053	59%	6,788	66%
55-59	12,568	930	7%	8,053	64%	8,983	71%
60-64	13,285	1,105	8%	9,718	73%	10,823	81%
65-69	12,434	813	7%	10,617	85%	11,430	92%
70-74	12,561	698	6%	10,476	83%	11,174	89%
75-79	10,738	619	6%	8,404	78%	9,023	84%
80-84	7,299	428	6%	5,521	76%	5,949	82%
85+	8,298	598	7%	5,084	61%	5,682	68%

Where to get Vaccinated

Where to Get Vaccinated:

Health Department, Local Pharmacies & Private Healthcare Providers

DOH-Martin:

Monday and Thursday, by appt.
772-221-4000, option 3

To find a provider near you:

www.Vaccines.gov